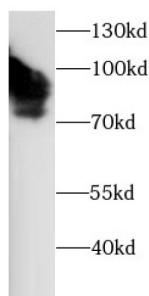


## Endoglin / CD105 (ENG) Antibody

Catalogue No.: abx240206



WB analysis of mouse spleen lysates, using CD105 antibody (1/1000 dilution).

Endoglin / CD105 (ENG) Antibody is a Rabbit Polyclonal antibody for the detection of CD105.

This gene encodes a homodimeric transmembrane protein which is a major glycoprotein of the vascular endothelium. This protein is a component of the transforming growth factor beta receptor complex and it binds to the beta1 and beta3 peptides with high affinity. Mutations in this gene cause hereditary hemorrhagic telangiectasia, also known as Osler-Rendu-Weber syndrome 1, an autosomal dominant multisystemic vascular dysplasia. This gene may also be involved in preeclampsia and several types of cancer. Alternatively spliced transcript variants encoding different isoforms have been found for this gene.

**Target:** Endoglin / CD105 (ENG)

**Clonality:** Polyclonal

**Reactivity:** Human, Mouse

**Tested Applications:** ELISA, WB

**Host:** Rabbit

**Recommended dilutions:** WB: 1/200 - 1/2000. Optimal dilutions/concentrations should be determined by the end user.

**Conjugation:** Unconjugated

**Immunogen:** endoglin

**Isotype:** IgG

**Form:** Liquid

**Purity:** ≥ 95% (SDS-PAGE)

**Purification:** Purified by immunogen affinity chromatography.

# Datasheet

Version: 2.0.0

Revision date: 06 Sep 2025



**Storage:** Aliquot and store at -20°C. Avoid repeated freeze/thaw cycles.

**Validity:** 12 months.

**UniProt Primary AC:** P17813 ([UniProt](#), [ExPASy](#))

**Gene Symbol:** ENG

**GeneID:** [2022](#)

**OMIM:** [131195](#)

**HGNC:** 3349

**KEGG:** hsa:2022

**Ensembl:** ENSG00000106991

**String:** [9606.ENSP00000362299](#)

**Molecular Weight:** Observed MW: 75-90 kDa, 170-180 kDa

**Buffer:** PBS, pH 7.3, with 0.02% sodium azide and 50% glycerol.

**Concentration:** 2 mg/ml

**Note:** THIS PRODUCT IS FOR RESEARCH USE ONLY. NOT FOR USE IN DIAGNOSTIC, THERAPEUTIC OR COSMETIC PROCEDURES. NOT FOR HUMAN OR ANIMAL CONSUMPTION.