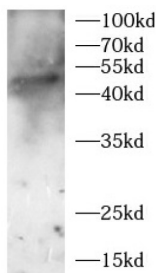
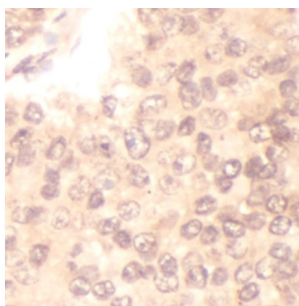


Adrenergic Receptor Alpha 2B (ADRA2B) Antibody

Catalogue No.: abx240212



WB analysis of mouse brain lysates, using ADRA2B antibody (1/1000 dilution).



IHC-P analysis of human breast cancer tissue, using ADRA2B antibody (1/100. dilution).

Adrenergic Receptor Alpha 2B (ADRA2B) Antibody is a Rabbit Polyclonal antibody for the detection of ADRA2B.

ADRA2B, also named as ADRA2L1 and ADRA2RL1, belongs to the G-protein coupled receptor 1 family. ADRA2B mediate the catecholamine-induced inhibition of adenylate cyclase through the action of G proteins. The antibody is specific to ADRA2B.

Target: Adrenergic Receptor Alpha 2B (ADRA2B)

Clonality: Polyclonal

Reactivity: Human, Mouse

Tested Applications: ELISA, WB, IHC

Host: Rabbit

Recommended dilutions: WB: 1/500 - 1/2000, IHC: 1/20 - 1/200. Optimal dilutions/concentrations should be determined by the end user.

Conjugation: Unconjugated

Immunogen: adrenergic, alpha-2B-, receptor

Isotype: IgG

Datasheet

Version: 2.0.0

Revision date: 09 Apr 2025



Form:	Liquid
Purity:	≥ 95% (SDS-PAGE)
Purification:	Purified by immunogen affinity chromatography.
Storage:	Aliquot and store at -20°C. Avoid repeated freeze/thaw cycles.
Validity:	12 months.
UniProt Primary AC:	P18089 (UniProt , ExPASy)
KEGG:	hsa:151
String:	9606.ENSP00000480573
Molecular Weight:	Observed MW: 49 kDa
Buffer:	PBS, pH 7.3, with 0.02% sodium azide and 50% glycerol.
Concentration:	2 mg/ml
Note:	THIS PRODUCT IS FOR RESEARCH USE ONLY. NOT FOR USE IN DIAGNOSTIC, THERAPEUTIC OR COSMETIC PROCEDURES. NOT FOR HUMAN OR ANIMAL CONSUMPTION.