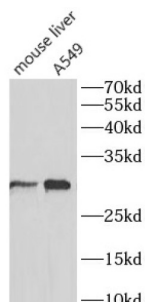


# Solute Carrier Family 31 (Copper Transporters), Member 1 (SLC31A1) Antibody

Catalogue No.: abx240279



WB analysis of various lysates, using SLC31A1 antibody (1/600 dilution).

Solute Carrier Family 31 (Copper Transporters), Member 1 (SLC31A1) Antibody is a Rabbit Polyclonal antibody for the detection of SLC31A1.

|                               |  |
|-------------------------------|--|
| <b>Target:</b>                | Solute Carrier Family 31 (Copper Transporters), Member 1 (SLC31A1)                         |
| <b>Clonality:</b>             | Polyclonal   |
| <b>Reactivity:</b>            | Human, Mouse   |
| <b>Tested Applications:</b>   | WB   |
| <b>Host:</b>                  | Rabbit   |
| <b>Recommended dilutions:</b> | WB: 1/500 - 1/1000. Optimal dilutions/concentrations should be determined by the end user. |
| <b>Conjugation:</b>           | Unconjugated   |
| <b>Immunogen:</b>             | High affinity copper uptake protein 1  |
| <b>Isotype:</b>               | IgG  |
| <b>Form:</b>                  | Liquid   |
| <b>Purity:</b>                | ≥ 95% (SDS-PAGE)   |
| <b>Purification:</b>          | Purified by immunogen affinity chromatography.   |
| <b>Storage:</b>               | Aliquot and store at -20°C. Avoid repeated freeze/thaw cycles.                             |
| <b>Validity:</b>              | 12 months.   |

# Datasheet

Version: 1.0.0

Revision date: 25 Jun 2025



**UniProt Primary AC:** O15431 ([UniProt](#), [ExPASy](#))

**Gene Symbol:** SLC31A1

**GeneID:** [1317](#)

**KEGG:** hsa:1317

**String:** [9606.ENSP00000363329](#)

**Molecular Weight:** Observed MW: 30 kDa

**Buffer:** PBS, pH 7.3, with 0.02% sodium azide and 50% glycerol.

**Concentration:** 2 mg/ml

**Note:** THIS PRODUCT IS FOR RESEARCH USE ONLY. NOT FOR USE IN DIAGNOSTIC, THERAPEUTIC OR COSMETIC PROCEDURES. NOT FOR HUMAN OR ANIMAL CONSUMPTION.

For Reference Only