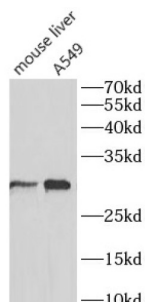


Solute Carrier Family 31 (Copper Transporters), Member 1 (SLC31A1) Antibody

Catalogue No.: abx240279



WB analysis of various lysates, using SLC31A1 antibody (1/600 dilution).

Solute Carrier Family 31 (Copper Transporters), Member 1 (SLC31A1) Antibody is a Rabbit Polyclonal antibody for the detection of SLC31A1.

Target:	Solute Carrier Family 31 (Copper Transporters), Member 1 (SLC31A1)
Clonality:	Polyclonal
Reactivity:	Human, Mouse
Tested Applications:	WB
Host:	Rabbit
Recommended dilutions:	WB: 1/500 - 1/1000. Optimal dilutions/concentrations should be determined by the end user.
Conjugation:	Unconjugated
Immunogen:	High affinity copper uptake protein 1
Isotype:	IgG
Form:	Liquid
Purity:	≥ 95% (SDS-PAGE)
Purification:	Purified by immunogen affinity chromatography.
Storage:	Aliquot and store at -20°C. Avoid repeated freeze/thaw cycles.
Validity:	12 months.

Datasheet

Version: 1.0.0

Revision date: 25 Jun 2025



UniProt Primary AC: O15431 ([UniProt](#), [ExPASy](#))

Gene Symbol: SLC31A1

GeneID: [1317](#)

KEGG: hsa:1317

String: [9606.ENSP00000363329](#)

Molecular Weight: Observed MW: 30 kDa

Buffer: PBS, pH 7.3, with 0.02% sodium azide and 50% glycerol.

Concentration: 2 mg/ml

Note: THIS PRODUCT IS FOR RESEARCH USE ONLY. NOT FOR USE IN DIAGNOSTIC, THERAPEUTIC OR COSMETIC PROCEDURES. NOT FOR HUMAN OR ANIMAL CONSUMPTION.

For Reference Only