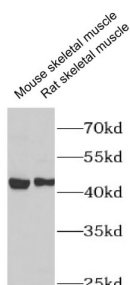


## Cholinergic Receptor, Nicotinic, Epsilon (CHRNE) Antibody

Catalogue No.: abx240294



WB analysis of various lysates, using CHRNE antibody (1/1000 dilution).

Cholinergic Receptor, Nicotinic, Epsilon (CHRNE) Antibody is a Rabbit Polyclonal antibody for the detection of CHRNE.

Acetylcholine receptors at mature mammalian neuromuscular junctions are pentameric protein complexes composed of four subunits in the ratio of two alpha subunits to one beta, one epsilon, and one delta subunit. The acetylcholine receptor changes subunit composition shortly after birth when the epsilon subunit replaces the gamma subunit seen in embryonic receptors. Mutations in the epsilon subunit are associated with congenital myasthenic syndrome.

**Target:** Cholinergic Receptor, Nicotinic, Epsilon (CHRNE)

**Clonality:** Polyclonal

**Reactivity:** Human, Mouse, Rat

**Tested Applications:** WB

**Host:** Rabbit

**Recommended dilutions:** WB: 1/500 - 1/2000. Optimal dilutions/concentrations should be determined by the end user.

**Conjugation:** Unconjugated

**Immunogen:** Acetylcholine receptor subunit epsilon

**Isotype:** IgG

**Form:** Liquid

**Purity:** ≥ 95% (SDS-PAGE)

**Purification:** Purified by immunogen affinity chromatography.

**Storage:** Aliquot and store at -20°C. Avoid repeated freeze/thaw cycles.

# Datasheet

Version: 1.0.0  
Revision date: 06 Sep 2025



**Validity:** 12 months.

**UniProt Primary AC:** Q04844 ([UniProt](#), [ExPASy](#))

**Gene Symbol:** CHRNE

**GeneID:** [1145](#)

**KEGG:** hsa:1145

**String:** [9606.ENSP00000293780](#)

**Molecular Weight:** Observed MW: 45 kDa

**Buffer:** PBS, pH 7.3, with 0.02% sodium azide and 50% glycerol.

**Concentration:** 2 mg/ml

**Note:** THIS PRODUCT IS FOR RESEARCH USE ONLY. NOT FOR USE IN DIAGNOSTIC, THERAPEUTIC OR COSMETIC PROCEDURES. NOT FOR HUMAN OR ANIMAL CONSUMPTION.

For Reference Only