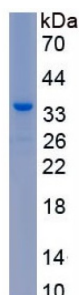
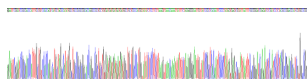


Monkey Complement Fragment C3a (C3a) Protein

Catalogue No.: abx655921



SDS-PAGE analysis of recombinant Monkey C3a Protein



Gene sequencing extract of recombinant Monkey C3a Protein.

Monkey Complement Fragment C3a (C3a) is a recombinant Monkey protein produced in a Prokaryotic expression system (E. coli).

Target: Complement Fragment C3a (C3a)

Origin: Monkey

Expression: Recombinant

Tested Applications: WB, SDS-PAGE

Host: E. coli

Conjugation: Unconjugated

Form: Lyophilized

Purity: > 80%

Reconstitution: Reconstitute in ddH₂O to a concentration of 0.1-0.2 mg/ml. Do not vortex.

Storage: Store at 2-8 °C for up to one month. Store at -80 °C for up to one year. Avoid repeated freeze/thaw cycles.

Datasheet

Version: 5.0.0

Revision date: 16 Jul 2025



Molecular Weight: Calculated MW: 34.3 kDa
Observed MW (SDS-PAGE): 35 kDa

Sequence Fragment: Cys693-Cys728

Sequence: CCEHGMRE NPMRFSCQRR TRYITLDEAC KKAFLDCC

Tag: N-terminal His tag and GST tag

Buffer: Prior to lyophilization: PBS, pH 7.4, containing 0.01% Sarcosyl, 5% Trehalose.

Activity: Not tested

Concentration: Prior to lyophilization: 50 µg/ml

Note: THIS PRODUCT IS FOR RESEARCH USE ONLY. NOT FOR USE IN DIAGNOSTIC, THERAPEUTIC OR COSMETIC PROCEDURES. NOT FOR HUMAN OR ANIMAL CONSUMPTION.

For Reference Only