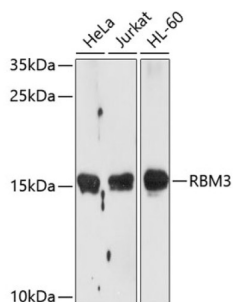
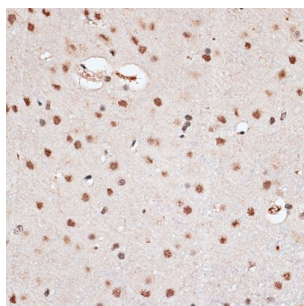


Putative RNA-Binding Protein 3 (RBM3) Antibody

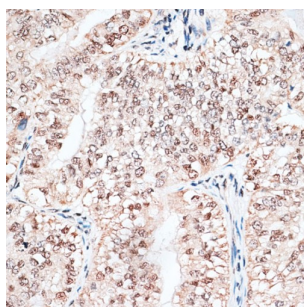
Catalogue No.: abx004547



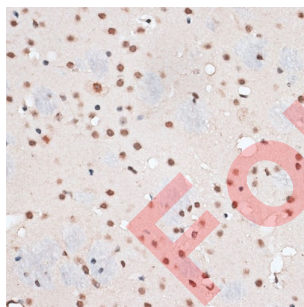
Western blot analysis of extracts of various cell lines using RBM3 Antibody (1/1000 dilution).



Immunohistochemistry of paraffin-embedded Rat brain using RBM3 Antibody (1/100 dilution, 40x lens).



Immunohistochemistry of paraffin-embedded Human endometrium cancer using RBM3 Antibody (1/100 dilution, 40x lens).



Immunohistochemistry of paraffin-embedded Mouse brain using RBM3 Antibody (1/100 dilution, 40x lens).

RBM3 Antibody is a Rabbit Polyclonal antibody against RBM3. This gene is a member of the glycine-rich RNA-binding protein family and encodes a protein with one RNA recognition motif (RRM) domain. Expression of this gene is induced by cold shock and low oxygen tension. A pseudogene exists on chromosome 1. Multiple alternatively spliced transcript variants that are predicted to encode different isoforms have been characterized although some of these variants fit nonsense-mediated decay (NMD) criteria.

Target: Putative RNA-Binding Protein 3 (RBM3)

Datasheet

Version: 4.0.0
Revision date: 04 Aug 2025



Clonality:	Polyclonal
Reactivity:	Human, Mouse, Rat
Tested Applications:	WB, IHC
Host:	Rabbit
Recommended dilutions:	WB: 1/200 - 1/2000, IHC-P: 1/50 - 1/200. Not tested in IHC-F. Optimal dilutions/concentrations should be determined by the end user.
Conjugation:	Unconjugated
Immunogen:	Recombinant fusion protein corresponding to human RBM3
Isotype:	IgG
Form:	Liquid
Purification:	Purified by affinity chromatography.
Storage:	Aliquot and store at -20°C. Avoid repeated freeze/thaw cycles.
UniProt Primary AC:	P98179 (UniProt , ExPASy)
Gene Symbol:	RBM3
GeneID:	5935
NCBI Accession:	NP_006734.1
KEGG:	hsa:5935
String:	9606.ENSP00000365950
Molecular Weight:	Calculated MW: 17 kDa Observed MW: 17 kDa
Buffer:	PBS, pH 7.3, containing 0.02% sodium azide, 50% glycerol.
Concentration:	1 mg/ml
Note:	THIS PRODUCT IS FOR RESEARCH USE ONLY. NOT FOR USE IN DIAGNOSTIC, THERAPEUTIC OR COSMETIC PROCEDURES. NOT FOR HUMAN OR ANIMAL CONSUMPTION.