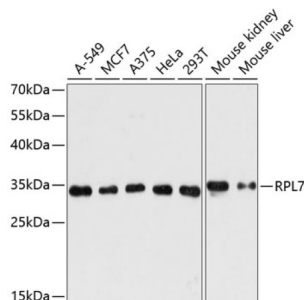
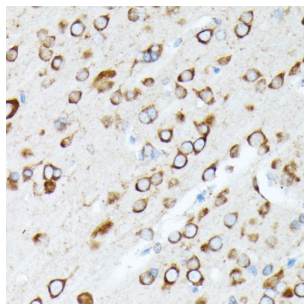


## Ribosomal Protein L7 (RPL7) Antibody

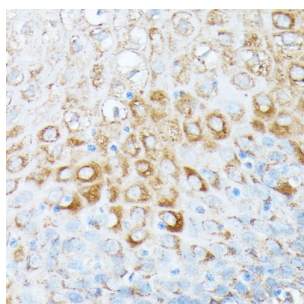
Catalogue No.: abx004548



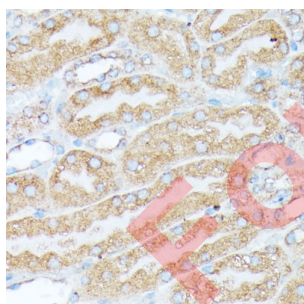
Western blot analysis of extracts of various cell lines using RPL7 Antibody (1/3000 dilution).



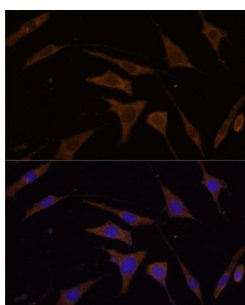
Immunohistochemistry of paraffin-embedded Rat brain using RPL7 Antibody (1/100 dilution, 40x lens).



Immunohistochemistry of paraffin-embedded Human esophageal using RPL7 Antibody (1/100 dilution, 40x lens).



Immunohistochemistry of paraffin-embedded Mouse kidney using RPL7 Antibody (1/100 dilution, 40x lens).



Immunofluorescence analysis of L929 cells using RPL7 Antibody (1/100 dilution, 40x lens). Blue: DAPI for nuclear staining.

# Datasheet

Version: 3.0.0

Revision date: 10 Oct 2025



RPL7 Antibody is a Rabbit Polyclonal antibody against RPL7. Ribosomes, the organelles that catalyze protein synthesis, consist of a small 40S subunit and a large 60S subunit. Together these subunits are composed of 4 RNA species and approximately 80 structurally distinct proteins. This gene encodes a ribosomal protein that is a component of the 60S subunit. The protein belongs to the L30P family of ribosomal proteins. It contains an N-terminal basic region-leucine zipper (BZIP)-like domain and the RNP consensus submotif RNP2. In vitro the BZIP-like domain mediates homodimerization and stable binding to DNA and RNA, with a preference for 28S rRNA and mRNA. The protein can inhibit cell-free translation of mRNAs, suggesting that it plays a regulatory role in the translation apparatus. It is located in the cytoplasm. The protein has been shown to be an autoantigen in patients with systemic autoimmune diseases, such as systemic lupus erythematosus. As is typical for genes encoding ribosomal proteins, there are multiple processed pseudogenes of this gene dispersed through the genome.

<b>Target:</b>	Ribosomal Protein L7 (RPL7)
<b>Clonality:</b>	Polyclonal
<b>Reactivity:</b>	Human, Mouse, Rat
<b>Tested Applications:</b>	WB, IHC, IF/ICC
<b>Host:</b>	Rabbit
<b>Recommended dilutions:</b>	WB: 1/500 - 1/2000, IHC-P: 1/50 - 1/100, IF/ICC: 1/50 - 1/100. Not tested in IHC-F. Optimal dilutions/concentrations should be determined by the end user.
<b>Conjugation:</b>	Unconjugated
<b>Immunogen:</b>	Recombinant fusion protein corresponding to human RPL7
<b>Isotype:</b>	IgG
<b>Form:</b>	Liquid
<b>Purification:</b>	Purified by affinity chromatography.
<b>Storage:</b>	Aliquot and store at -20°C. Avoid repeated freeze/thaw cycles.
<b>UniProt Primary AC:</b>	P18124 ( <a href="#">UniProt</a> , <a href="#">ExPASy</a> )
<b>Gene Symbol:</b>	RPL7
<b>GeneID:</b>	<a href="#">6129</a>
<b>NCBI Accession:</b>	NP_000962.2
<b>KEGG:</b>	hsa:6129
<b>String:</b>	<a href="#">9606.ENSP00000339795</a>

# Datasheet

Version: 3.0.0

Revision date: 10 Oct 2025



**Molecular Weight:** Calculated MW: 29 kDa  
Observed MW: 29 kDa

**Buffer:** PBS, pH 7.3, containing 0.02% sodium azide, 50% glycerol.

**Concentration:** 1 mg/ml

**Note:** THIS PRODUCT IS FOR RESEARCH USE ONLY. NOT FOR USE IN DIAGNOSTIC, THERAPEUTIC OR COSMETIC PROCEDURES. NOT FOR HUMAN OR ANIMAL CONSUMPTION.

For Reference Only