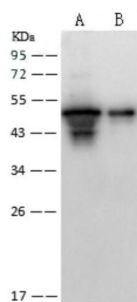


SARS-CoV Nucleoprotein Antibody

Catalogue No.: abx201410



Western blot analysis of recombinant SARS-CoV Nucleoprotein (30 ng and 5 ng), using SARS-CoV Nucleoprotein Antibody (1/2000 dilution).

SARS-CoV Nucleoprotein Antibody is a Rabbit Polyclonal antibody for the detection of SARS-CoV Nucleoprotein.

Coronaviruses are enveloped viruses with a positive-sense RNA genome and with a nucleocapsid of helical symmetry. Coronavirus nucleoproteins localize to the cytoplasm and the nucleolus, a subnuclear structure, in both virus-infected primary cells and in cells transfected with plasmids that express N protein. Coronavirus N protein is required for coronavirus RNA synthesis, and has RNA chaperone activity that may be involved in template switch. Nucleocapsid protein is a most abundant protein of coronavirus. During virion assembly, N protein binds to viral RNA and leads to formation of the helical nucleocapsid. Nucleocapsid protein is a highly immunogenic phosphoprotein also implicated in viral genome replication and in modulating cell signaling pathways. Because of the conservation of N protein sequence and its strong immunogenicity, the N protein of coronavirus is chosen as a diagnostic tool.

Target:	SARS-CoV
Clonality:	Polyclonal
Reactivity:	Virus
Tested Applications:	ELISA, WB
Host:	Rabbit
Recommended dilutions:	ELISA: 1/5000 - 1/10000, WB: 1/1000 - 1/5000. Optimal dilutions/concentrations should be determined by the end user.
Conjugation:	Unconjugated
Immunogen:	Recombinant SARS-CoV Nucleoprotein/NP Protein
Isotype:	IgG
Form:	Liquid
Purification:	Purified by antigen affinity chromatography. 0.2 µm filtered.

Datasheet

Version: 1.0.0

Revision date: 04 Oct 2025



Storage: Aliquot and store at -20 °C. Avoid repeated freeze/thaw cycles.

Buffer: PBS.

Concentration: 1 mg/ml

Note: THIS PRODUCT IS FOR RESEARCH USE ONLY. NOT FOR USE IN DIAGNOSTIC, THERAPEUTIC OR COSMETIC PROCEDURES. NOT FOR HUMAN OR ANIMAL CONSUMPTION.

Directions for use: Centrifuge before opening to ensure complete recovery of vial contents.

For Reference Only