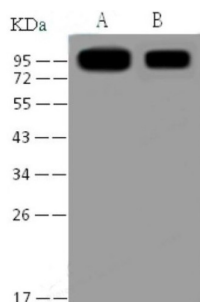


## SARS-CoV S1 Antibody

Catalogue No.: abx201413



Western blot analysis of recombinant SARS-CoV S1 Protein (30 ng and 5 ng), using SARS-CoV Spike S1 Antibody (1/1000 dilution).

SARS-CoV Spike S1 Antibody is a Mouse Monoclonal antibody for the detection of SARS-CoV Spike S1.

The spike (S) glycoprotein of coronaviruses contains protrusions that will only bind to certain receptors on the host cell. Known receptors bind S1 are ACE2, angiotensin-converting enzyme 2; DPP4, dipeptidyl peptidase-4; APN, aminopeptidase N; CEACAM, carcinoembryonic antigen-related cell adhesion molecule 1; Sia, sialic acid; O-ac Sia, O-acetylated sialic acid. The spike is essential for both host specificity and viral infectivity. The term 'peplomer' is typically used to refer to a grouping of heterologous proteins on the virus surface that function together. The spike (S) glycoprotein of coronaviruses is known to be essential in the binding of the virus to the host cell at the advent of the infection process.

**Target:** SARS-CoV

**Clonality:** Monoclonal

**Reactivity:** Virus

**Tested Applications:** ELISA, WB

**Host:** Mouse

**Recommended dilutions:** ELISA: 1/1000 - 1/2000, WB: 1/1000 - 1/5000. Optimal dilutions/concentrations should be determined by the end user.

**Conjugation:** Unconjugated

**Immunogen:** Recombinant SARS-CoV S1 Protein

**Isotype:** IgG<sub>2a</sub>

**Form:** Liquid

**Purification:** Purified by Protein A affinity chromatography. 0.2 µm filtered.

**Storage:** Aliquot and store at -20 °C. Avoid repeated freeze/thaw cycles.

# Datasheet

Version: 3.0.0

Revision date: 07 Oct 2025



**Buffer:** PBS.

**Note:** THIS PRODUCT IS FOR RESEARCH USE ONLY. NOT FOR USE IN DIAGNOSTIC, THERAPEUTIC OR COSMETIC PROCEDURES. NOT FOR HUMAN OR ANIMAL CONSUMPTION.

**Directions for use:** Centrifuge before opening to ensure complete recovery of vial contents.

For Reference Only