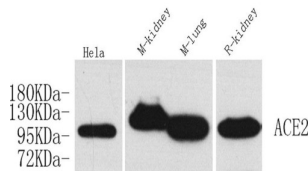


Angiotensin Converting Enzyme 2 (ACE2) Antibody

Catalogue No.: abx201271



Western blot analysis of various samples, using ACE2 antibody (1/1000 dilution).

Angiotensin Converting Enzyme 2 (ACE2) is a Rabbit Polyclonal antibody for the detection of Angiotensin Converting Enzyme 2 (ACE2).

The protein encoded by this gene belongs to the angiotensin-converting enzyme family of dipeptidyl carboxydipeptidases and has considerable homology to human angiotensin 1 converting enzyme. This secreted protein catalyzes the cleavage of angiotensin I into angiotensin 1-9, and angiotensin II into the vasodilator angiotensin 1-7. The organ- and cell-specific expression of this gene suggests that it may play a role in the regulation of cardiovascular and renal function, as well as fertility. In addition, the encoded protein is a functional receptor for the spike glycoprotein of the human coronaviruses SARS and HCoV-NL63.

Target: Angiotensin Converting Enzyme 2 (ACE2)

Clonality: Polyclonal

Reactivity: Human, Mouse, Rat

Tested Applications: WB

Host: Rabbit

Recommended dilutions: WB: 1/500 - 1/2000. Optimal dilutions/concentrations should be determined by the end user.

Conjugation: Unconjugated

Immunogen: KLH-conjugated Synthetic peptide corresponding to Mouse ACE2

Isotype: IgG

Form: Liquid

Purification: Purified by antigen affinity chromatography.

Storage: Aliquot and store at -20 °C. Avoid repeated freeze/thaw cycles.

Datasheet

Version: 2.0.0
Revision date: 07 Oct 2025



UniProt Primary AC: Q8R0I0 ([UniProt](#), [ExPASy](#))

Gene Symbol: ACE2

GeneID: [70008](#)

KEGG: mmu:70008

Ensembl: ENSMUSG00000015405

Buffer: PBS, pH 7.4, containing with 1% BSA, 0.02% sodium azide, 50% glycerol.

Concentration: 0.5 mg/ml

Note: THIS PRODUCT IS FOR RESEARCH USE ONLY. NOT FOR USE IN DIAGNOSTIC, THERAPEUTIC OR COSMETIC PROCEDURES. NOT FOR HUMAN OR ANIMAL CONSUMPTION.

Directions for use: Centrifuge before opening to ensure complete recovery of vial contents.

For Reference Only