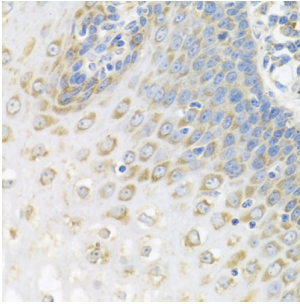
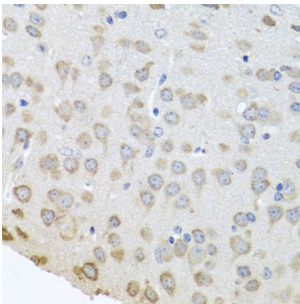


Poly(A) Binding Protein Cytoplasmic 4 (PABPC4) Antibody

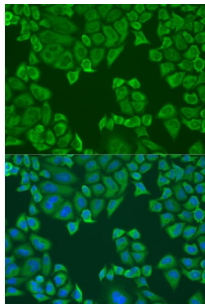
Catalogue No.: abx004563



Immunohistochemistry of paraffin-embedded Human esophagus using AntibodyPC4 Antibody (1/100 dilution, 40x lens).



Immunohistochemistry of paraffin-embedded Mouse brain using AntibodyPC4 Antibody (1/100 dilution, 40x lens).



Immunofluorescence analysis of U2OS cells using AntibodyPC4 Antibody (1/100 dilution). Blue: DAPI for nuclear staining.

PABPC4 Antibody is a Rabbit Polyclonal antibody against PABPC4. Poly(A)-binding proteins (PABPs) bind to the poly(A) tail present at the 3-prime ends of most eukaryotic mRNAs. PABPC4 or IPABP (inducible PABP) was isolated as an activation-induced T-cell mRNA encoding a protein. Activation of T cells increased PABPC4 mRNA levels in T cells approximately 5-fold. PABPC4 contains 4 RNA-binding domains and proline-rich C terminus. PABPC4 is localized primarily to the cytoplasm. It is suggested that PABPC4 might be necessary for regulation of stability of labile mRNA species in activated T cells. PABPC4 was also identified as an antigen, APP1 (activated-platelet protein-1), expressed on thrombin-activated rabbit platelets. PABPC4 may also be involved in the regulation of protein translation in platelets and megakaryocytes or may participate in the binding or stabilization of polyadenylates in platelet dense granules. Alternatively spliced transcript variants encoding different isoforms have been found for this gene.

Target: Poly(A) Binding Protein Cytoplasmic 4 (PABPC4)

Clonality: Polyclonal

Reactivity: Human, Mouse, Rat

Tested Applications: IHC, IF/ICC

Datasheet

Version: 2.0.0
Revision date: 02 Jun 2025



Host: Rabbit

Recommended dilutions: IHC-P: 1/50 - 1/200, IF/ICC: 1/50 - 1/200. Not tested in IHC-F. Optimal dilutions/concentrations should be determined by the end user.

Conjugation: Unconjugated

Immunogen: A synthetic peptide corresponding to human PABPC4

Isotype: IgG

Form: Liquid

Purification: Purified by affinity chromatography.

Storage: Aliquot and store at -20°C. Avoid repeated freeze/thaw cycles.

UniProt Primary AC: Q13310 ([UniProt](#), [ExPASy](#))

Gene Symbol: PABPC4

GeneID: [8761](#)

NCBI Accession: NP_003810.1

KEGG: hsa:8761

String: [9606.ENSP00000361949](#)

Buffer: PBS, pH 7.3, containing 0.02% sodium azide, 50% glycerol.

Concentration: 1 mg/ml

Note: THIS PRODUCT IS FOR RESEARCH USE ONLY. NOT FOR USE IN DIAGNOSTIC, THERAPEUTIC OR COSMETIC PROCEDURES. NOT FOR HUMAN OR ANIMAL CONSUMPTION.