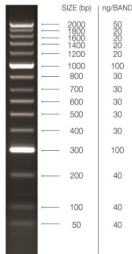


0.05-2 kbp DNA Marker

Catalogue No.:abx461023



0.05-2 kbp DNA Marker contains 15 DNA fragments ranging from 50 to 2000 base pairs. The 300, 1000 bp and 2000 bp bands have the highest intensity for easy identification. Ready-to-use, the blue dye in the loading buffer runs at approximately 4 bp on a 1% gel. Can optionally be used for mass determination. 1 test is equivalent to 1 lane.

Target: 0.05-2 kbp DNA Marker

Tested Applications: SDS-PAGE

Recommended dilutions:	Recommended Agarose % (w/v)Effective Separation Range of Linear DNA (bp)	
	0.3	5000 - 60,000
	0.5	1000 - 20,000
	0.7	800 - 12,000
	1.0	500 - 10,000
	1.2	400 - 7000
	1.5	200 - 3000
	2.0	100 - 2000
	2.5	50 - 100
	3.0	10 - 75

Note: Circularized plasmids can be cut and linearized by an appropriate restriction enzyme to measure their molecular weight.

Form: Liquid

Storage: Store all components at -20 °C. Avoid repeated freeze/thaw cycles.

Validity: Up to 12 months.

Buffer: Contains a restriction digest plus one or more PCR products.

Note: THIS PRODUCT IS FOR RESEARCH USE ONLY. NOT FOR USE IN DIAGNOSTIC, THERAPEUTIC OR COSMETIC PROCEDURES. NOT FOR HUMAN OR ANIMAL CONSUMPTION.

Directions for use: Thaw, mix, and briefly centrifuge before use. Vortex the tube, then add 5 µl of ladder per lane. There is no need to add loading buffer to the ladder. The provided 5X Sample Loading Buffer can be used for sample loading; it should not be used for diluting the ladder.