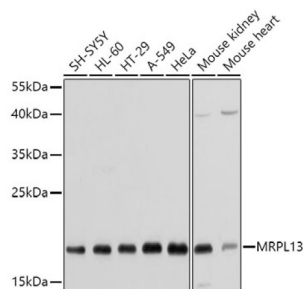


Mitochondrial Ribosomal Protein L13 (MRPL13) Antibody

Catalogue No.: abx004590



Western blot analysis of extracts of various cell lines using MRPL13 Antibody (1/1000 dilution).

MRPL13 Antibody is a Rabbit Polyclonal antibody against MRPL13. Mammalian mitochondrial ribosomal proteins are encoded by nuclear genes and help in protein synthesis within the mitochondrion. Mitochondrial ribosomes (mitoribosomes) consist of a small 28S subunit and a large 39S subunit. They have an estimated 75% protein to rRNA composition compared to prokaryotic ribosomes, where this ratio is reversed. Another difference between mammalian mitoribosomes and prokaryotic ribosomes is that the latter contain a 5S rRNA. Among different species, the proteins comprising the mitoribosome differ greatly in sequence, and sometimes in biochemical properties, which prevents easy recognition by sequence homology. This gene encodes a 39S subunit protein.

Target: Mitochondrial Ribosomal Protein L13 (MRPL13)

Clonality: Polyclonal

Reactivity: Human, Mouse, Rat

Tested Applications: WB

Host: Rabbit

Recommended dilutions: WB: 1/500 - 1/2000. Optimal dilutions/concentrations should be determined by the end user.

Conjugation: Unconjugated

Immunogen: Recombinant fusion protein corresponding to human MRPL13

Isotype: IgG

Form: Liquid

Purification: Purified by affinity chromatography.

Storage: Aliquot and store at -20°C. Avoid repeated freeze/thaw cycles.

UniProt Primary AC: Q9BYD1 ([UniProt](#), [ExPASy](#))

Datasheet

Version: 3.0.0

Revision date: 27 Jun 2025



Gene Symbol: MRPL13

GeneID: [28998](#)

NCBI Accession: NP_054797.2

String: [9606.ENSP00000306548](#)

Molecular Weight: Calculated MW: 20 kDa
Observed MW: 20 kDa

Buffer: PBS, pH 7.3, containing 0.02% sodium azide, 50% glycerol.

Concentration: 1 mg/ml

Note: THIS PRODUCT IS FOR RESEARCH USE ONLY. NOT FOR USE IN DIAGNOSTIC, THERAPEUTIC OR COSMETIC PROCEDURES. NOT FOR HUMAN OR ANIMAL CONSUMPTION.

For Reference Only