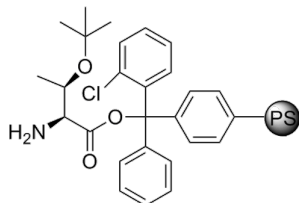


H-L-Thr(tBu)-2-Cl-Trityl Resin

Catalogue No.: abx095101



This product is currently in development. The lead time for this product may be several months. Please contact us at info@abbexa.com for an updated lead time before purchasing this product.

H-L-Thr(tBu)-2-Cl-Trityl resin is a preloaded 2-Chlorotrityl resin for use in peptide synthesis.

Appearance: Off-white to yellow beads

Microscopic analysis: Round shaped beads, non broken or deformed

Particle size: 100-200 mesh dry

Target: H-L-Thr(tBu)-2-Cl-Trityl Resin

Form: Solid

Purity: Substitution level: 0.3-0.8 mmol/g
DVB: 0.01

Storage: Store at 2-8 °C. Keep cool and dry.

Note: THIS PRODUCT IS FOR RESEARCH USE ONLY. NOT FOR USE IN DIAGNOSTIC, THERAPEUTIC OR COSMETIC PROCEDURES. NOT FOR HUMAN OR ANIMAL CONSUMPTION.