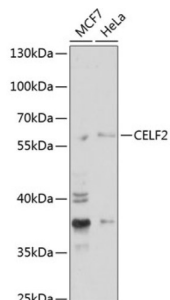


CUGBP Elav-Like Family Member 2 (CELF2) Antibody

Catalogue No.: abx004624



Western blot analysis of various lysates using CELF2 Antibody at 1/1000 dilution. Secondary antibody: HRP-conjugated Goat anti-Rabbit IgG (H+L) at 1/10000 dilution. Lysates/proteins: 25 µg per lane. Blocking buffer: 3% nonfat dry milk in TBST. Exposure time: 180s.

CELF2 Antibody is a Rabbit Monoclonal antibody against CELF2. Members of the CELF/BRUNOL protein family contain two N-terminal RNA recognition motif (RRM) domains, one C-terminal RRM domain, and a divergent segment of 160-230 aa between the second and third RRM domains. Members of this protein family regulate pre-mRNA alternative splicing and may also be involved in mRNA editing, and translation. Alternative splicing results in multiple transcript variants encoding different isoforms.

Target:	CUGBP Elav-Like Family Member 2 (CELF2)
Clonality:	Monoclonal
Reactivity:	Human
Tested Applications:	ELISA, WB
Host:	Rabbit
Recommended dilutions:	ELISA: 1 µg/ml, WB: 1/200 - 1/500. Optimal dilutions/concentrations should be determined by the end user.
Conjugation:	Unconjugated
Immunogen:	Recombinant fusion protein containing a sequence corresponding to amino acids 422-521 of human CELF2.
Isotype:	IgG
Form:	Liquid
Purification:	Purified by affinity chromatography.
Storage:	Aliquot and store at -20°C. Avoid repeated freeze/thaw cycles.
UniProt Primary AC:	O95319 (UniProt , ExPASy)
Gene Symbol:	CELF2

Datasheet

Version: 4.0.0

Revision date: 24 Jun 2025



GeneID: [10659](#)

NCBI Accession: NP_006552.3

KEGG: hsa:10659

String: [9606.ENSP00000443926](#)

Molecular Weight: Calculated MW: 54 kDa
Observed MW: 60 kDa

Buffer: PBS, pH 7.3, containing 0.02% sodium azide, 50% glycerol.

Concentration: > 0.2 mg/ml

Note: THIS PRODUCT IS FOR RESEARCH USE ONLY. NOT FOR USE IN DIAGNOSTIC, THERAPEUTIC OR COSMETIC PROCEDURES. NOT FOR HUMAN OR ANIMAL CONSUMPTION.

For Reference Only