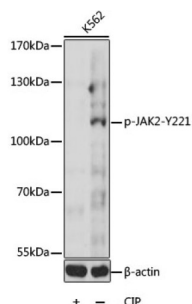


Tyrosine-Protein Kinase JAK2 Phospho-Tyr221 (JAK2 pY221) Antibody

Catalogue No.: abx000422



Western blot analysis of lysates from K562 cells, using Phospho-JAK2-Y221 Antibody at 1/1000 dilution. K562 cells were treated by CIP (20 μ l CIP for each 400 μ l cell lysate) at 37 °C for 1 hour. Secondary antibody: HRP-conjugated Goat anti-Rabbit IgG (H+L) at 1/10000 dilution. Lysates/proteins: 25 μ g per lane. Blocking buffer: 3% BSA. Exposure time: 30s.

Tyrosine-Protein Kinase JAK2 Phospho-Tyr221 (JAK2 pY221) Antibody is a Rabbit Polyclonal antibody against Tyrosine-Protein Kinase JAK2 Phospho-Tyr221 (JAK2 pY221). This gene product is a protein tyrosine kinase involved in a specific subset of cytokine receptor signaling pathways. It has been found to be constitutively associated with the prolactin receptor and is required for responses to gamma interferon. Mice that do not express an active protein for this gene exhibit embryonic lethality associated with the absence of definitive erythropoiesis.

Target:	Tyrosine-Protein Kinase JAK2 Phospho-Tyr221 (JAK2 pY221)
Clonality:	Polyclonal
Target Modification:	Tyr221
Modification:	Phosphorylation
Reactivity:	Human, Mouse, Rat
Tested Applications:	ELISA, WB
Host:	Rabbit
Recommended dilutions:	ELISA: 1 μ g/ml, WB: 1/500 - 1/2000. Optimal dilutions/concentrations should be determined by the end user.
Conjugation:	Unconjugated
Immunogen:	A synthetic phosphorylated peptide around Y221 of human JAK2.
Isotype:	IgG
Form:	Liquid
Purification:	Purified by affinity chromatography.

Datasheet

Version: 4.0.0
Revision date: 18 Jun 2025



Storage: Aliquot and store at -20°C. Avoid repeated freeze/thaw cycles.

UniProt Primary AC: O60674 ([UniProt](#), [ExPASy](#))

Gene Symbol: JAK2

GeneID: [3717](#)

NCBI Accession: NP_004963.1

KEGG: hsa:3717

String: [9606.ENSP00000371067](#)

Molecular Weight: Calculated MW: 131 kDa
Observed MW: 125 kDa

Buffer: PBS, pH 7.3, containing 0.01% thimerosal, 50% glycerol.

Concentration: > 0.2 mg/ml

Note: THIS PRODUCT IS FOR RESEARCH USE ONLY. NOT FOR USE IN DIAGNOSTIC, THERAPEUTIC OR COSMETIC PROCEDURES. NOT FOR HUMAN OR ANIMAL CONSUMPTION.

For Reference Only