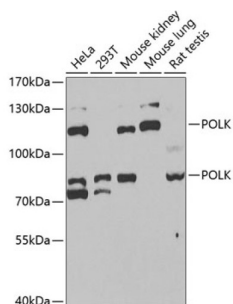


## DNA Polymerase Kappa (POLK) Antibody

Catalogue No.: abx004686



Western blot analysis of extracts of various cell lines using POLK Antibody (1/1000 dilution).

POLK Antibody is a Rabbit Polyclonal antibody against POLK. External and internal DNA-damaging agents continually threaten the integrity of genetic material in cells. Although a variety of repair mechanisms exist to remove the resulting lesions, some lesions escape repair and block the replication machinery. Members of the Y family of DNA polymerases, such as POLK, permit the continuity of the replication fork by allowing replication through such DNA lesions. Each Y family polymerase has a unique DNA-damage bypass and fidelity profile. POLK is specialized for the extension step of lesion bypass (summary by Lone et al., 2007).

**Target:** DNA Polymerase Kappa (POLK)

**Clonality:** Polyclonal

**Reactivity:** Human, Mouse, Rat

**Tested Applications:** WB

**Host:** Rabbit

**Recommended dilutions:** WB: 1/500 - 1/2000. Optimal dilutions/concentrations should be determined by the end user.

**Conjugation:** Unconjugated

**Immunogen:** Recombinant fusion protein corresponding to human POLK

**Isotype:** IgG

**Form:** Liquid

**Purification:** Purified by affinity chromatography.

**Storage:** Aliquot and store at -20°C. Avoid repeated freeze/thaw cycles.

**UniProt Primary AC:** Q9UBT6 ([UniProt](#), [ExPASy](#))

# Datasheet

Version: 3.0.0

Revision date: 03 Jun 2025



**Gene Symbol:** POLK

**GeneID:** [51426](#)

**NCBI Accession:** NP\_057302.1

**String:** [9606.ENSP00000241436](#)

**Molecular Weight:** Calculated MW: 42 kDa/52 kDa/54 kDa/55 kDa/76 kDa/88 kDa/98 kDa  
Observed MW: 80 kDa/110 kDa

**Buffer:** PBS, pH 7.3, containing 0.02% sodium azide, 50% glycerol.

**Concentration:** 1 mg/ml

**Note:** THIS PRODUCT IS FOR RESEARCH USE ONLY. NOT FOR USE IN DIAGNOSTIC, THERAPEUTIC OR COSMETIC PROCEDURES. NOT FOR HUMAN OR ANIMAL CONSUMPTION.

For Reference Only