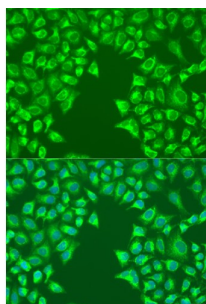


Low Density Lipoprotein Receptor Related Protein 6 (LRP6) Antibody

Catalogue No.: abx004691



Immunofluorescence analysis of U2OS cells using LRP6 Antibody (1/100 dilution). Blue: DAPI for nuclear staining.

LRP6 Antibody is a Rabbit Polyclonal antibody against LRP6. This gene encodes a member of the low density lipoprotein (LDL) receptor gene family. LDL receptors are transmembrane cell surface proteins involved in receptor-mediated endocytosis of lipoprotein and protein ligands. The protein encoded by this gene functions as a receptor or, with Frizzled, a co-receptor for Wnt and thereby transmits the canonical Wnt/beta-catenin signaling cascade. Through its interaction with the Wnt/beta-catenin signaling cascade this gene plays a role in the regulation of cell differentiation, proliferation, and migration and the development of many cancer types. This protein undergoes gamma-secretase dependent RIP- (regulated intramembrane proteolysis) processing but the precise locations of the cleavage sites have not been determined.

Target: Low Density Lipoprotein Receptor Related Protein 6 (LRP6)

Clonality: Polyclonal

Reactivity: Human

Tested Applications: IF/ICC

Host: Rabbit

Recommended dilutions: IF/ICC: 1/50 - 1/200. Optimal dilutions/concentrations should be determined by the end user.

Conjugation: Unconjugated

Immunogen: Recombinant fusion protein corresponding to human LRP6

Isotype: IgG

Form: Liquid

Purification: Purified by affinity chromatography.

Storage: Aliquot and store at -20°C. Avoid repeated freeze/thaw cycles.

UniProt Primary AC: O75581 ([UniProt](#), [ExPASy](#))

Datasheet

Version: 4.0.0

Revision date: 21 Jun 2025



Gene Symbol: LRP6

GeneID: [4040](#)

NCBI Accession: NP_002327.2

KEGG: hsa:4040

String: [9606.ENSP00000261349](#)

Buffer: PBS, pH 7.3, containing 0.02% sodium azide, 50% glycerol.

Concentration: 1 mg/ml

Note: THIS PRODUCT IS FOR RESEARCH USE ONLY. NOT FOR USE IN DIAGNOSTIC, THERAPEUTIC OR COSMETIC PROCEDURES. NOT FOR HUMAN OR ANIMAL CONSUMPTION.

For Reference Only