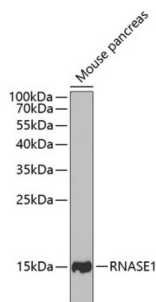


## Ribonuclease A (RNASE1) Antibody

Catalogue No.: abx004739



Western blot analysis of extracts of Mouse pancreas using RNASE1 Antibody (1/1000 dilution).

RNASE1 Antibody is a Rabbit Polyclonal antibody against RNASE1. This gene encodes a member of the pancreatic-type of secretory ribonucleases, a subset of the ribonuclease A superfamily. The encoded endonuclease cleaves internal phosphodiester RNA bonds on the 3'-side of pyrimidine bases. It prefers poly(C) as a substrate and hydrolyzes 2',3'-cyclic nucleotides, with a pH optimum near 8.0. The encoded protein is monomeric and more commonly acts to degrade ds-RNA over ss-RNA. Alternative splicing occurs at this locus and four transcript variants encoding the same protein have been identified.

**Target:** Ribonuclease A (RNASE1)

**Clonality:** Polyclonal

**Reactivity:** Mouse

**Tested Applications:** WB

**Host:** Rabbit

**Recommended dilutions:** WB: 1/500 - 1/2000. Optimal dilutions/concentrations should be determined by the end user.

**Conjugation:** Unconjugated

**Immunogen:** Recombinant fusion protein corresponding to human RNASE1

**Isotype:** IgG

**Form:** Liquid

**Purification:** Purified by affinity chromatography.

**Storage:** Aliquot and store at -20°C. Avoid repeated freeze/thaw cycles.

**UniProt Primary AC:** P07998 ([UniProt](#), [ExPASy](#))

# Datasheet

Version: 7.0.0

Revision date: 06 Mar 2025



**Gene Symbol:** RNASE1

**GeneID:** [6035](#)

**NCBI Accession:** NP\_937875.1

**KEGG:** hsa:6035

**String:** [9606.ENSP00000381057](#)

**Molecular Weight:** Calculated MW: 17 kDa  
Observed MW: 15 kDa

**Buffer:** PBS, pH 7.3, containing 0.02% sodium azide, 50% glycerol.

**Concentration:** 1 mg/ml

**Note:** THIS PRODUCT IS FOR RESEARCH USE ONLY. NOT FOR USE IN DIAGNOSTIC, THERAPEUTIC OR COSMETIC PROCEDURES. NOT FOR HUMAN OR ANIMAL CONSUMPTION.

For Reference Only