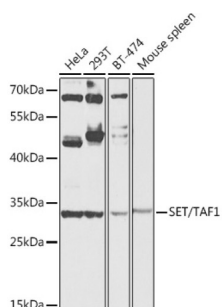


Protein SET (SET) Antibody

Catalogue No.: abx004747



Western blot analysis of extracts of various cell lines using SET/TAF1 Antibody (1/1000 dilution).

SET Antibody is a Rabbit Polyclonal antibody against SET. The protein encoded by this gene inhibits acetylation of nucleosomes, especially histone H4, by histone acetylases (HAT). This inhibition is most likely accomplished by masking histone lysines from being acetylated, and the consequence is to silence HAT-dependent transcription. The encoded protein is part of a complex localized to the endoplasmic reticulum but is found in the nucleus and inhibits apoptosis following attack by cytotoxic T lymphocytes. This protein can also enhance DNA replication of the adenovirus genome. Several transcript variants encoding different isoforms have been found for this gene.

Target: Protein SET (SET)

Clonality: Polyclonal

Reactivity: Human, Mouse, Rat

Tested Applications: WB

Host: Rabbit

Recommended dilutions: WB: 1/500 - 1/2000. Optimal dilutions/concentrations should be determined by the end user.

Conjugation: Unconjugated

Immunogen: Recombinant fusion protein corresponding to human SET/TAF1

Isotype: IgG

Form: Liquid

Purification: Purified by affinity chromatography.

Storage: Aliquot and store at -20°C. Avoid repeated freeze/thaw cycles.

UniProt Primary AC: Q01105 ([UniProt](#), [ExPASy](#))

Datasheet

Version: 4.0.0

Revision date: 10 Sep 2025



Gene Symbol: SET

GeneID: [6418](#)

NCBI Accession: NP_003002.2

KEGG: hsa:6418

String: [9606.ENSP00000361777](#)

Molecular Weight: Calculated MW: 30 kDa/31 kDa/32 kDa/33 kDa
Observed MW: 33 kDa

Buffer: PBS, pH 7.3, containing 0.02% sodium azide, 50% glycerol.

Concentration: 1 mg/ml

Note: THIS PRODUCT IS FOR RESEARCH USE ONLY. NOT FOR USE IN DIAGNOSTIC, THERAPEUTIC OR COSMETIC PROCEDURES. NOT FOR HUMAN OR ANIMAL CONSUMPTION.

For Reference Only