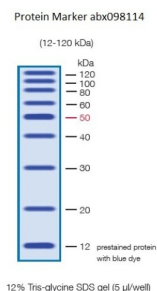


12-120 kDa Protein Marker

Catalogue No.: abx098114



12-120 kDa Protein Marker is composed of eight unstained recombinant proteins (20 kDa, 30 kDa, 40 kDa, 50 kDa, 60 kDa, 80 kDa, 100 kDa, 120 kDa) and one blue prestained recombinant protein (12 kDa). The 50 kDa band serves as the reference band as it is double the concentration of the other bands, and therefore appears with double the intensity of the other bands on the gel. Ready-to-use format, no heating required.

Target: 12-120 kDa Protein Marker

Form: Liquid

Storage: Store at -20 °C. Avoid repeated freeze/thaw cycles.

Molecular Weight: 12-120 kDa

Buffer: 50 mM Tris-HCl, pH 6.8, 5 mM EDTA, 10 mM DTT, 10% glycerol, 1% SDS, 0.01% phenol red.

Concentration: 12 kDa band: 2 µg/5 µl
50 kDa band: 1 µg/5 µl
All other bands: 0.5 µg/5 µl each

Note: THIS PRODUCT IS FOR RESEARCH USE ONLY. NOT FOR USE IN DIAGNOSTIC, THERAPEUTIC OR COSMETIC PROCEDURES. NOT FOR HUMAN OR ANIMAL CONSUMPTION.

Directions for use: Mix well before use. Use 5 µl/well for small gels or 10 µl/well for larger gels.

Suggested Electrophoresis Conditions:

Carry out electrophoresis at 200 V for 50 minutes.