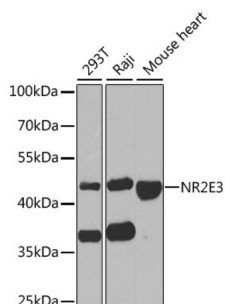


Photoreceptor Cell Specific Nuclear Receptor / PNR (NR2E3) Antibody

Catalogue No.: abx004760



Western blot analysis of extracts of various cell lines using NR2E3 Antibody (1/1000 dilution).

NR2E3 Antibody is a Rabbit Polyclonal antibody against NR2E3. This protein is part of a large family of nuclear receptor transcription factors involved in signaling pathways. Nuclear receptors have been shown to regulate pathways involved in embryonic development, as well as in maintenance of proper cell function in adults. Members of this family are characterized by discrete domains that function in DNA and ligand binding. This gene encodes a retinal nuclear receptor that is a ligand-dependent transcription factor. Defects in this gene are a cause of enhanced S cone syndrome. Alternatively spliced transcript variants encoding different isoforms have been identified.

Target: Photoreceptor Cell Specific Nuclear Receptor / PNR (NR2E3)

Clonality: Polyclonal

Reactivity: Human, Mouse, Rat

Tested Applications: WB

Host: Rabbit

Recommended dilutions: WB: 1/500 - 1/2000. Optimal dilutions/concentrations should be determined by the end user.

Conjugation: Unconjugated

Immunogen: Recombinant fusion protein corresponding to human NR2E3

Isotype: IgG

Form: Liquid

Purification: Purified by affinity chromatography.

Storage: Aliquot and store at -20°C. Avoid repeated freeze/thaw cycles.

UniProt Primary AC: Q9Y5X4 ([UniProt](#), [ExPASy](#))

Datasheet

Version: 4.0.0

Revision date: 06 Oct 2025



Gene Symbol: NR2E3

GeneID: [10002](#)

NCBI Accession: NP_055064.1

String: [9606.ENSP00000482504](#)

Molecular Weight: Calculated MW: 39 kDa/44 kDa

Observed MW: 45 kDa

Buffer: PBS, pH 7.3, containing 0.02% sodium azide, 50% glycerol.

Concentration: 1 mg/ml

Note: THIS PRODUCT IS FOR RESEARCH USE ONLY. NOT FOR USE IN DIAGNOSTIC, THERAPEUTIC OR COSMETIC PROCEDURES. NOT FOR HUMAN OR ANIMAL CONSUMPTION.

For Reference Only