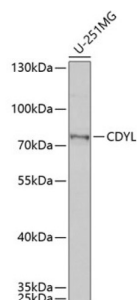


## Chromodomain Y-Like Protein (CDYL) Antibody

Catalogue No.: abx004780



Western blot analysis of extracts of U-251MG cells using CDYL Antibody (1/1000 dilution).

CDYL Antibody is a Rabbit Polyclonal antibody against CDYL. Chromodomain Y is a primate-specific Y-chromosomal gene family expressed exclusively in the testis and implicated in infertility. Although the Y-linked genes are testis-specific, this autosomal gene is ubiquitously expressed. The Y-linked genes arose by retrotransposition of an mRNA from this gene, followed by amplification of the retroposed gene. Proteins encoded by this gene superfamily possess a chromodomain, a motif implicated in chromatin binding and gene suppression, and a catalytic domain believed to be involved in histone acetylation. Multiple proteins are encoded by transcript variants of this gene.

<b>Target:</b>	Chromodomain Y-Like Protein (CDYL)
<b>Clonality:</b>	Polyclonal
<b>Reactivity:</b>	Human, Rat
<b>Tested Applications:</b>	WB
<b>Host:</b>	Rabbit
<b>Recommended dilutions:</b>	WB: 1/500 - 1/2000. Optimal dilutions/concentrations should be determined by the end user.
<b>Conjugation:</b>	Unconjugated
<b>Immunogen:</b>	Recombinant fusion protein corresponding to human CDYL
<b>Isotype:</b>	IgG
<b>Form:</b>	Liquid
<b>Purification:</b>	Purified by affinity chromatography.
<b>Storage:</b>	Aliquot and store at -20°C. Avoid repeated freeze/thaw cycles.
<b>UniProt Primary AC:</b>	Q9Y232 ( <a href="#">UniProt</a> , <a href="#">ExPASy</a> )

# Datasheet

Version: 4.0.0

Revision date: 13 Oct 2025



**Gene Symbol:** CDYL

**GeneID:** [9425](#)

**NCBI Accession:** NP\_004815.3

**String:** [9606.ENSP00000380718](#)

**Molecular Weight:** Calculated MW: 34 kDa/45 kDa/60 kDa/66 kDa  
Observed MW: 75 kDa

**Buffer:** PBS, pH 7.3, containing 0.02% sodium azide, 50% glycerol.

**Concentration:** 1 mg/ml

**Note:** THIS PRODUCT IS FOR RESEARCH USE ONLY. NOT FOR USE IN DIAGNOSTIC, THERAPEUTIC OR COSMETIC PROCEDURES. NOT FOR HUMAN OR ANIMAL CONSUMPTION.

For Reference Only