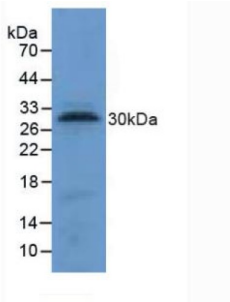
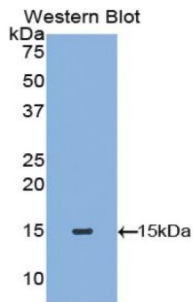


## Tryptase Alpha / Beta-1 (TPSAB1) Antibody

Catalogue No.: abx100213



Western blot analysis of Dog Lung Tissue.



Western blot analysis of recombinant Dog TPSAB1.

Polyclonal Antibody to Tryptase Alpha / Beta-1 (TPSAB1).

<b>Target:</b>	Tryptase Alpha / Beta-1 (TPSAB1)
<b>Research Area:</b>	Enzymes and Kinases, Infection Immunity, Rheumatology
<b>Clonality:</b>	Polyclonal
<b>Reactivity:</b>	Dog
<b>Tested Applications:</b>	WB, IHC, IF/ICC
<b>Host:</b>	Rabbit
<b>Recommended dilutions:</b>	WB: 0.01-2 µg/ml, IHC: 5-20 µg/ml, IF/ICC: 5-20 µg/ml. Optimal dilutions/concentrations should be determined by the end user.
<b>Conjugation:</b>	Unconjugated
<b>Immunogen:</b>	TPSAB1 (Thr151-Pro275)
<b>Form:</b>	Liquid
<b>Purification:</b>	Purified by antigen-specific affinity chromatography, followed by Protein A affinity chromatography.

# Datasheet

Version: 3.0.0

Revision date: 08 Sep 2025



**Storage:** Aliquot and store at -20°C. Avoid repeated freeze/thaw cycles.

**UniProt Primary AC:** P15944 ([UniProt](#), [ExPASy](#))

**Gene Symbol:** TPSAB1

**KEGG:** cfa:100049001

**String:** [9612.ENSCAFP00000041549](#)

**Buffer:** 0.01 M PBS, pH 7.4, containing 0.05% Proclin-300, 50% glycerol.

**Note:** THIS PRODUCT IS FOR RESEARCH USE ONLY. NOT FOR USE IN DIAGNOSTIC, THERAPEUTIC OR COSMETIC PROCEDURES. NOT FOR HUMAN OR ANIMAL CONSUMPTION.

For Reference Only