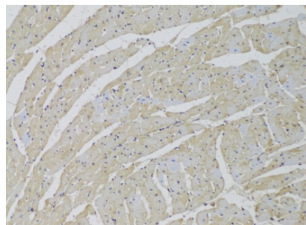


Lysosome Membrane Protein 2 (SCARB2) Antibody

Catalogue No.: abx004803



Immunohistochemistry of paraffin-embedded Rat heart using SCARB2 Antibody (1/100 dilution, 20x lens).

SCARB2 Antibody is a Rabbit Polyclonal antibody against SCARB2. The protein encoded by this gene is a type III glycoprotein that is located primarily in limiting membranes of lysosomes and endosomes. Earlier studies in mice and rat suggested that this protein may participate in membrane transportation and the reorganization of endosomal/lysosomal compartment. The protein deficiency in mice was reported to impair cell membrane transport processes and cause pelvic junction obstruction, deafness, and peripheral neuropathy. Further studies in human showed that this protein is a ubiquitously expressed protein and that it is involved in the pathogenesis of HFMD (hand, foot, and mouth disease) caused by enterovirus-71 and possibly by coxsackievirus A16. Mutations in this gene caused an autosomal recessive progressive myoclonic epilepsy-4 (EPM4), also known as action myoclonus-renal failure syndrome (AMRF). Alternatively spliced transcript variants encoding different isoforms have been found for this gene.

Target:	Lysosome Membrane Protein 2 (SCARB2)
Clonality:	Polyclonal
Reactivity:	Rat
Tested Applications:	IHC
Host:	Rabbit
Recommended dilutions:	IHC-P: 1/50 - 1/200. Not tested in IHC-F. Optimal dilutions/concentrations should be determined by the end user.
Conjugation:	Unconjugated
Immunogen:	Recombinant fusion protein corresponding to human SCARB2
Isotype:	IgG
Form:	Liquid
Purification:	Purified by affinity chromatography.
Storage:	Aliquot and store at -20°C. Avoid repeated freeze/thaw cycles.

Datasheet

Version: 4.0.0
Revision date: 11 Oct 2025



UniProt Primary AC: Q14108 ([UniProt](#), [ExPASy](#))

Gene Symbol: SCARB2

GeneID: [950](#)

NCBI Accession: NP_005497.1

KEGG: hsa:950

String: [9606.ENSP00000264896](#)

Buffer: PBS, pH 7.3, containing 0.02% sodium azide, 50% glycerol.

Concentration: 1 mg/ml

Note: THIS PRODUCT IS FOR RESEARCH USE ONLY. NOT FOR USE IN DIAGNOSTIC, THERAPEUTIC OR COSMETIC PROCEDURES. NOT FOR HUMAN OR ANIMAL CONSUMPTION.

For Reference Only