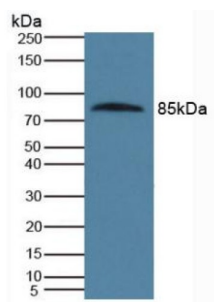
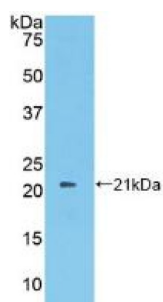


Protein S (PROS) Antibody

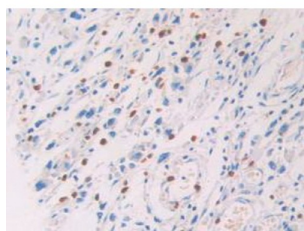
Catalogue No.: abx100407



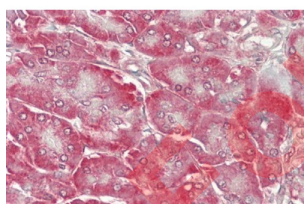
Western blot analysis of Human Serum.



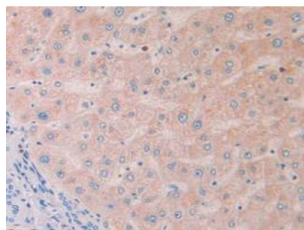
Western blot analysis of recombinant Human PROS.



IHC-P analysis of Human Stomach Tissue, with DAB staining.



IHC-P analysis of Human Pancreas Tissue, with HE staining.



IHC-P analysis of Human Liver Tissue, with DAB staining.

Datasheet

Version: 2.0.0
Revision date: 26 Jul 2025



Polyclonal Antibody to Protein S (PROS).

Target:	Protein S (PROS)
Clonality:	Polyclonal
Reactivity:	Human
Tested Applications:	WB, IHC, IF/ICC
Host:	Rabbit
Recommended dilutions:	WB: 0.01-2 µg/ml, IHC: 5-20 µg/ml, IF/ICC: 5-20 µg/ml. Optimal dilutions/concentrations should be determined by the end user.
Conjugation:	Unconjugated
Immunogen:	PROS (Lys481-Pro667)
Form:	Liquid
Purification:	Purified by antigen-specific affinity chromatography, followed by Protein A affinity chromatography.
Storage:	Aliquot and store at -20°C. Avoid repeated freeze/thaw cycles.
UniProt Primary AC:	P07225 (UniProt , ExPASy)
KEGG:	hsa:5627
String:	9606.ENSP00000377783
Buffer:	0.01 M PBS, pH 7.4, containing 0.05% Proclin-300, 50% glycerol.
Note:	THIS PRODUCT IS FOR RESEARCH USE ONLY. NOT FOR USE IN DIAGNOSTIC, THERAPEUTIC OR COSMETIC PROCEDURES. NOT FOR HUMAN OR ANIMAL CONSUMPTION.