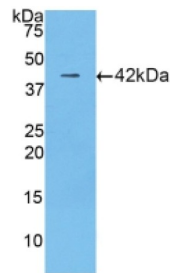
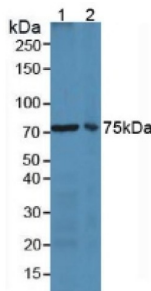


Lactotransferrin (LTF) Antibody

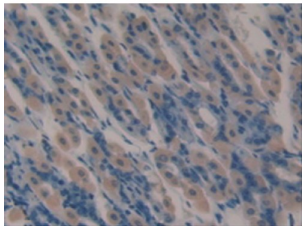
Catalogue No.:abx100587



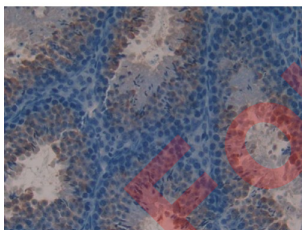
Western blot analysis of recombinant Mouse LTF.



Western blot analysis of (1) Mouse Lung Tissue and (2) Mouse Spleen Tissue.



IHC-P analysis of Mouse Stomach Tissue, with DAB staining.



IHC-P analysis of Mouse Testis Tissue, with DAB staining.

Polyclonal Antibody to Lactotransferrin (LTF).

**Target:** Lactotransferrin (LTF)

**Research Area:** Tumor Immunity, Infection Immunity

**Clonality:** Polyclonal

# Datasheet

Version: 3.0.0  
Revision date: 13 Oct 2025



Reactivity:	Mouse
Tested Applications:	WB, IHC, IF/ICC
Host:	Rabbit
Recommended dilutions:	WB: 0.01-5 µg/ml, IHC: 5-20 µg/ml, IF/ICC: 5-20 µg/ml. Optimal dilutions/concentrations should be determined by the end user.
Conjugation:	Unconjugated
Immunogen:	<a href="#">abx067681</a> - Recombinant LTF (Cys63-Gly193) expressed in E. coli
Form:	Liquid
Purification:	Purified by antigen-specific affinity chromatography, followed by Protein A affinity chromatography.
Storage:	Aliquot and store at -20°C. Avoid repeated freeze/thaw cycles.
UniProt Primary AC:	P08071 ( <a href="#">UniProt</a> , <a href="#">ExPASy</a> )
Gene Symbol:	LTF
KEGG:	mmu:17002
String:	<a href="#">10090.ENSMUSP00000035077</a>
Buffer:	0.01 M PBS, pH 7.4, containing 0.05% Proclin-300, 50% glycerol.
Concentration:	0.24 mg/ml
Note:	THIS PRODUCT IS FOR RESEARCH USE ONLY. NOT FOR USE IN DIAGNOSTIC, THERAPEUTIC OR COSMETIC PROCEDURES. NOT FOR HUMAN OR ANIMAL CONSUMPTION.