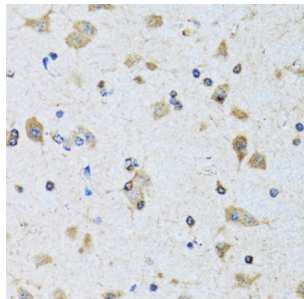
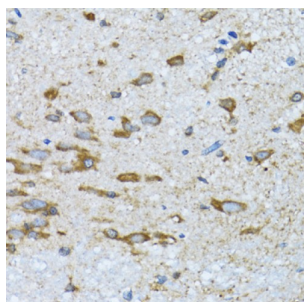


Pyruvate Dehydrogenase Phosphatase Catalytic Subunit 1 (PDP1) Antibody

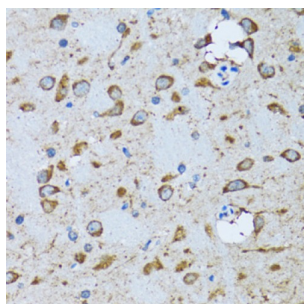
Catalogue No.: abx004840



Immunohistochemistry of paraffin-embedded Rat brain using PDP1 Antibody (1/100 dilution, 40x lens).



Immunohistochemistry of paraffin-embedded Mouse spinal cord using PDP1 Antibody (1/100 dilution, 40x lens).



Immunohistochemistry of paraffin-embedded Mouse brain using PDP1 Antibody (1/100 dilution, 40x lens).

PDP1 Antibody is a Rabbit Polyclonal antibody against PDP1. Pyruvate dehydrogenase (E1) is one of the three components (E1, E2, and E3) of the large pyruvate dehydrogenase complex. Pyruvate dehydrogenase kinases catalyze phosphorylation of serine residues of E1 to inactivate the E1 component and inhibit the complex. Pyruvate dehydrogenase phosphatases catalyze the dephosphorylation and activation of the E1 component to reverse the effects of pyruvate dehydrogenase kinases. Pyruvate dehydrogenase phosphatase is a heterodimer consisting of catalytic and regulatory subunits. Two catalytic subunits have been reported; one is predominantly expressed in skeletal muscle and another one is much more abundant in the liver. The catalytic subunit, encoded by this gene, is the former, and belongs to the protein phosphatase 2C (PP2C) superfamily. Along with the pyruvate dehydrogenase complex and pyruvate dehydrogenase kinases, this enzyme is located in the mitochondrial matrix. Mutation in this gene causes pyruvate dehydrogenase phosphatase deficiency. Multiple alternatively spliced transcript variants encoding different isoforms have been identified.

Target: Pyruvate Dehydrogenase Phosphatase Catalytic Subunit 1 (PDP1)

Clonality: Polyclonal

Reactivity: Human, Mouse, Rat

Datasheet

Version: 4.0.0
Revision date: 28 Sep 2025



Tested Applications:	IHC
Host:	Rabbit
Recommended dilutions:	IHC-P: 1/50 - 1/200. Not tested in IHC-F. Optimal dilutions/concentrations should be determined by the end user.
Conjugation:	Unconjugated
Immunogen:	Recombinant fusion protein corresponding to human PDP1
Isotype:	IgG
Form:	Liquid
Purification:	Purified by affinity chromatography.
Storage:	Aliquot and store at -20°C. Avoid repeated freeze/thaw cycles.
UniProt Primary AC:	Q9P0J1 (UniProt , ExPASy)
Gene Symbol:	PDP1
GeneID:	54704
NCBI Accession:	NP_060914.2
String:	9606.ENSP00000379503
Buffer:	PBS, pH 7.3, containing 0.02% sodium azide, 50% glycerol.
Concentration:	1 mg/ml
Note:	THIS PRODUCT IS FOR RESEARCH USE ONLY. NOT FOR USE IN DIAGNOSTIC, THERAPEUTIC OR COSMETIC PROCEDURES. NOT FOR HUMAN OR ANIMAL CONSUMPTION.