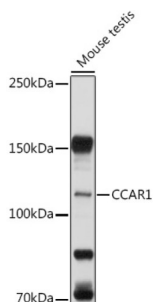
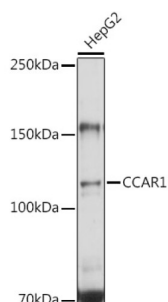


## Cell Division Cycle And Apoptosis Regulator 1 (CCAR1) Antibody

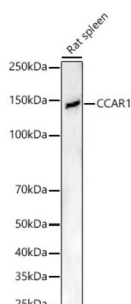
Catalogue No.: abx004842



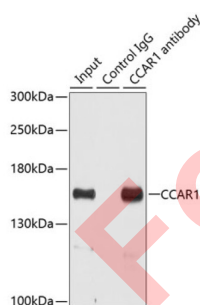
Western blot analysis of lysates from Mouse testis, using CCAR1 Antibody at 1/1000 dilution. Secondary antibody: HRP-conjugated Goat anti-Rabbit IgG (H+L) at 1/10000 dilution. Lysates/proteins: 25 µg per lane. Blocking buffer: 3% nonfat dry milk in TBST. Exposure time: 5s.



Western blot analysis of lysates from HepG2 cells, using CCAR1 Antibody at 1/1000 dilution. Secondary antibody: HRP-conjugated Goat anti-Rabbit IgG (H+L) at 1/10000 dilution. Lysates/proteins: 25 µg per lane. Blocking buffer: 3% nonfat dry milk in TBST. Exposure time: 10s.



Western blot analysis of lysates from Rat spleen, using CCAR1 Antibody at 1/700 dilution. Secondary antibody: HRP-conjugated Goat anti-Rabbit IgG (H+L) at 1/10000 dilution. Lysates/proteins: 25 µg per lane. Blocking buffer: 3% nonfat dry milk in TBST. Exposure time: 30s.



Immunoprecipitation analysis of 200 µg extracts of HeLa cells using 3 µg CCAR1 antibody. Western blot was performed from the immunoprecipitate using CCAR1 antibody at a dilution of 1/500.

CCAR1 Antibody is a Rabbit Polyclonal antibody against CCAR1.

**Target:** Cell Division Cycle And Apoptosis Regulator 1 (CCAR1)

**Clonality:** Polyclonal

**Reactivity:** Human, Mouse, Rat

# Datasheet

Version: 3.0.0  
Revision date: 22 May 2025



<b>Tested Applications:</b>	ELISA, WB, IP
<b>Host:</b>	Rabbit
<b>Recommended dilutions:</b>	ELISA: 1 µg/ml, WB: 1/500 - 1/1000, IP: 0.5 µg - 4 µg antibody per 200 µg - 400 µg extracts of whole cells. Optimal dilutions/concentrations should be determined by the end user.
<b>Conjugation:</b>	Unconjugated
<b>Immunogen:</b>	Recombinant fusion protein containing a sequence corresponding to amino acids 1-200 of human CCAR1.
<b>Isotype:</b>	IgG
<b>Form:</b>	Liquid
<b>Purification:</b>	Purified by affinity chromatography.
<b>Storage:</b>	Aliquot and store at -20°C. Avoid repeated freeze/thaw cycles.
<b>UniProt Primary AC:</b>	Q8IX12 ( <a href="#">UniProt</a> , <a href="#">ExPASy</a> )
<b>Gene Symbol:</b>	CCAR1
<b>GeneID:</b>	<a href="#">55749</a>
<b>NCBI Accession:</b>	NP_060707.2
<b>KEGG:</b>	hsa:55749
<b>String:</b>	<a href="#">9606.ENSP00000265872</a>
<b>Molecular Weight:</b>	Calculated MW: 133 kDa Observed MW: 132 kDa
<b>Buffer:</b>	PBS, pH 7.3, containing 0.02% sodium azide, 50% glycerol.
<b>Concentration:</b>	> 0.2 mg/ml
<b>Note:</b>	THIS PRODUCT IS FOR RESEARCH USE ONLY. NOT FOR USE IN DIAGNOSTIC, THERAPEUTIC OR COSMETIC PROCEDURES. NOT FOR HUMAN OR ANIMAL CONSUMPTION.