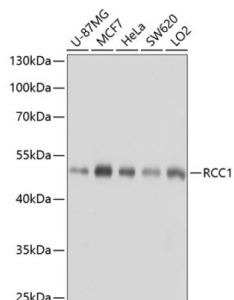
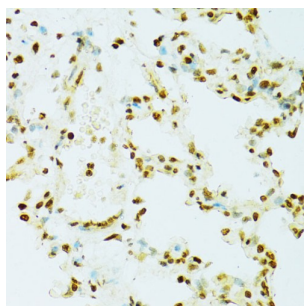


Regulator Of Chromosome Condensation 1 (RCC1) Antibody

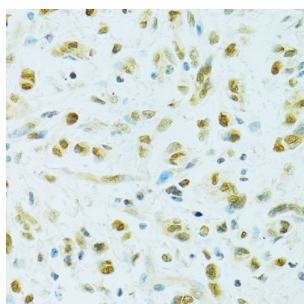
Catalogue No.: abx004853



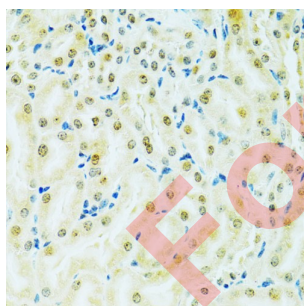
Western blot analysis of extracts of various cell lines using RCC1 Antibody (1/1000 dilution).



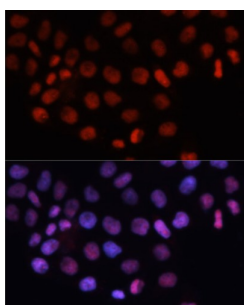
Immunohistochemistry of paraffin-embedded Rat lung using RCC1 Antibody (1/100 dilution, 40x lens).



Immunohistochemistry of paraffin-embedded Human gastric cancer using RCC1 Antibody (1/100 dilution, 40x lens).



Immunohistochemistry of paraffin-embedded Mouse kidney using RCC1 Antibody (1/100 dilution, 40x lens).



Immunofluorescence analysis of HeLa cells using RCC1 Antibody (1/100 dilution). Blue: DAPI for nuclear staining.

Datasheet

Version: 4.0.0
Revision date: 20 Aug 2025



RCC1 Antibody is a Rabbit Polyclonal antibody against RCC1. CHC1, also named as RCC1, promotes the exchange of ran-bound gdp by gtp. It is involved in the regulation of onset of chromosome condensation in the S-phase. Phosphorylation of RCC1 on serines located in or near its nuclear localization signal activates RCC1 to generate RanGTP on mitotic chromosomes, which is required for spindle assembly and chromosome segregation. This antibody is a rabbit polyclonal antibody raised against residues near the C terminus of human RCC1.

Target:	Regulator Of Chromosome Condensation 1 (RCC1)
Clonality:	Polyclonal
Reactivity:	Human, Mouse, Rat
Tested Applications:	WB, IHC, IF/ICC
Host:	Rabbit
Recommended dilutions:	WB: 1/1000 - 1/2000, IHC-P: 1/50 - 1/200, IF/ICC: 1/50 - 1/200. Not tested in IHC-F. Optimal dilutions/concentrations should be determined by the end user.
Conjugation:	Unconjugated
Immunogen:	Recombinant fusion protein corresponding to human RCC1
Isotype:	IgG
Form:	Liquid
Purification:	Purified by affinity chromatography.
Storage:	Aliquot and store at -20°C. Avoid repeated freeze/thaw cycles.
UniProt Primary AC:	P18754 (UniProt , ExPASy)
Gene Symbol:	RCC1
GeneID:	1104
NCBI Accession:	NP_001260.1
KEGG:	hsa:1104
String:	9606.ENSP00000362937
Molecular Weight:	Calculated MW: 44 kDa/48 kDa Observed MW: 45 kDa

Datasheet

Version: 4.0.0

Revision date: 20 Aug 2025



Buffer: PBS, pH 7.3, containing 0.02% sodium azide, 50% glycerol.

Concentration: 1 mg/ml

Note: THIS PRODUCT IS FOR RESEARCH USE ONLY. NOT FOR USE IN DIAGNOSTIC, THERAPEUTIC OR COSMETIC PROCEDURES. NOT FOR HUMAN OR ANIMAL CONSUMPTION.

For Reference Only