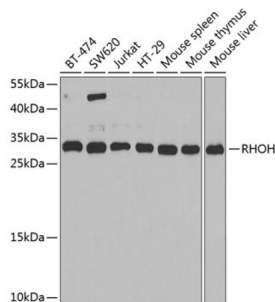
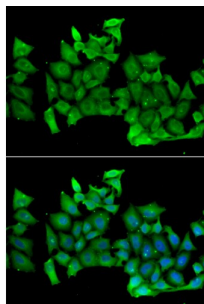


## Ras Homolog Family Member H (RHOH) Antibody

Catalogue No.: abx004858



Western blot analysis of extracts of various cell lines using RHOH Antibody (1/1000 dilution).



Immunofluorescence analysis of MCF-7 cells using RHOH Antibody

RHOH Antibody is a Rabbit Polyclonal antibody against RHOH. The protein encoded by this gene is a member of the Ras superfamily of guanosine triphosphate (GTP)-metabolizing enzymes. The encoded protein is expressed in hematopoietic cells, where it functions as a negative regulator of cell growth and survival. This gene may be hypermutated or misexpressed in leukemias and lymphomas. Chromosomal translocations in non-Hodgkin's lymphoma occur between this locus and B-cell CLL/lymphoma 6 (BCL6) on chromosome 3, leading to the production of fusion transcripts. Alternative splicing in the 5' untranslated region results in multiple transcript variants that encode the same protein.

**Target:** Ras Homolog Family Member H (RHOH)

**Clonality:** Polyclonal

**Reactivity:** Human, Mouse

**Tested Applications:** WB, IF/ICC

**Host:** Rabbit

**Recommended dilutions:** WB: 1/500 - 1/2000, IF/ICC: 1/10 - 1/100. Optimal dilutions/concentrations should be determined by the end user.

**Conjugation:** Unconjugated

**Immunogen:** Recombinant fusion protein corresponding to human RHOH

**Isotype:** IgG

# Datasheet

Version: 3.0.0

Revision date: 29 Aug 2025



<b>Form:</b>	Liquid
<b>Purification:</b>	Purified by affinity chromatography.
<b>Storage:</b>	Aliquot and store at -20°C. Avoid repeated freeze/thaw cycles.
<b>UniProt Primary AC:</b>	Q15669 ( <a href="#">UniProt</a> , <a href="#">ExPASy</a> )
<b>Gene Symbol:</b>	RHOH
<b>GeneID:</b>	<a href="#">399</a>
<b>NCBI Accession:</b>	NP_004301.1
<b>KEGG:</b>	hsa:399
<b>String:</b>	<a href="#">9606.ENSP00000371219</a>
<b>Molecular Weight:</b>	Calculated MW: 21 kDa Observed MW: 27 kDa
<b>Buffer:</b>	PBS, pH 7.3, containing 0.02% sodium azide, 50% glycerol.
<b>Concentration:</b>	1 mg/ml
<b>Note:</b>	THIS PRODUCT IS FOR RESEARCH USE ONLY. NOT FOR USE IN DIAGNOSTIC, THERAPEUTIC OR COSMETIC PROCEDURES. NOT FOR HUMAN OR ANIMAL CONSUMPTION.