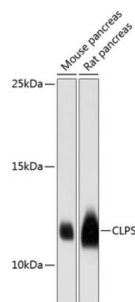


Colipase (CLPS) Antibody

Catalogue No.: abx004864



Western blot analysis of extracts of various cell lines using CLPS Antibody (1/3000 dilution).

CLPS Antibody is a Rabbit Polyclonal antibody against CLPS. The protein encoded by this gene is a cofactor needed by pancreatic lipase for efficient dietary lipid hydrolysis. It binds to the C-terminal, non-catalytic domain of lipase, thereby stabilizing an active conformation and considerably increasing the overall hydrophobic binding site. The gene product allows lipase to anchor noncovalently to the surface of lipid micelles, counteracting the destabilizing influence of intestinal bile salts. This cofactor is only expressed in pancreatic acinar cells, suggesting regulation of expression by tissue-specific elements. Three transcript variants encoding different isoforms have been found for this gene.

Target: Colipase (CLPS)

Clonality: Polyclonal

Reactivity: Mouse, Rat

Tested Applications: WB

Host: Rabbit

Recommended dilutions: WB: 1/500 - 1/2000. Optimal dilutions/concentrations should be determined by the end user.

Conjugation: Unconjugated

Immunogen: A synthetic peptide corresponding to human CLPS

Isotype: IgG

Form: Liquid

Purification: Purified by affinity chromatography.

Storage: Aliquot and store at -20°C. Avoid repeated freeze/thaw cycles.

UniProt Primary AC: P04118 ([UniProt](#), [ExPASy](#))

Datasheet

Version: 3.0.0
Revision date: 13 Oct 2025



Gene Symbol: CLPS

GeneID: [1208](#)

NCBI Accession: NP_001823.1

KEGG: hsa:1208

String: [9606.ENSP00000259938](#)

Molecular Weight: Calculated MW: 11 kDa
Observed MW: 12 kDa

Buffer: PBS, pH 7.3, containing 0.02% sodium azide, 50% glycerol.

Concentration: 1 mg/ml

Note: THIS PRODUCT IS FOR RESEARCH USE ONLY. NOT FOR USE IN DIAGNOSTIC, THERAPEUTIC OR COSMETIC PROCEDURES. NOT FOR HUMAN OR ANIMAL CONSUMPTION.

For Reference Only