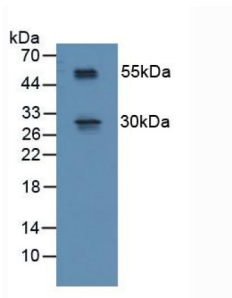
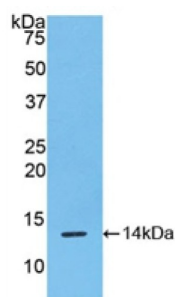


R-Spondin 1 (RSP01) Antibody

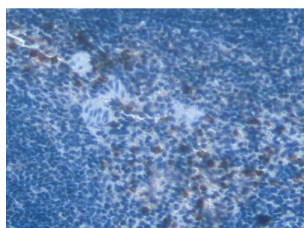
Catalogue No.: abx101034



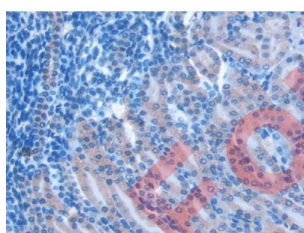
Western blot analysis of Mouse Spinal Cord Tissue.



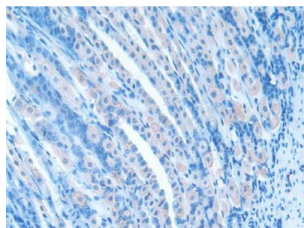
Western blot analysis of recombinant Mouse RSP01.



IHC-P analysis of Mouse Spleen Tissue, with DAB staining.



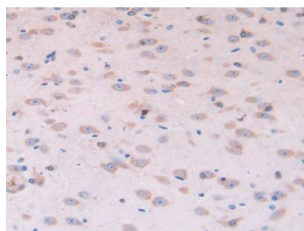
IHC-P analysis of Mouse Kidney Tissue, with DAB staining.



IHC-P analysis of Mouse Stomach Tissue, with DAB staining.

Datasheet

Version: 3.0.0
Revision date: 18 Aug 2025



IHC-P analysis of Mouse Brain Tissue, with DAB staining.

Polyclonal Antibody to RSPO1 (RSPO1).

Target: R-Spondin 1 (RSPO1)

Clonality: Polyclonal

Reactivity: Mouse

Tested Applications: WB, IHC, IF/ICC

Host: Rabbit

Recommended dilutions: WB: 0.01-2 µg/ml, IHC: 5-20 µg/ml, IF/ICC: 5-20 µg/ml. Optimal dilutions/concentrations should be determined by the end user.

Conjugation: Unconjugated

Immunogen: RSPO1 (Ser21-Ala135)

Form: Liquid

Purification: Purified by antigen-specific affinity chromatography, followed by Protein A affinity chromatography.

Storage: Aliquot and store at -20°C. Avoid repeated freeze/thaw cycles.

UniProt Primary AC: Q9Z132 ([UniProt](#), [ExPASy](#))

String: [10090.ENSMUSP00000030687](#)

Buffer: 0.01 M PBS, pH 7.4, containing 0.05% Proclin-300, 50% glycerol.

Concentration: 1 mg/ml

Note: THIS PRODUCT IS FOR RESEARCH USE ONLY. NOT FOR USE IN DIAGNOSTIC, THERAPEUTIC OR COSMETIC PROCEDURES. NOT FOR HUMAN OR ANIMAL CONSUMPTION.