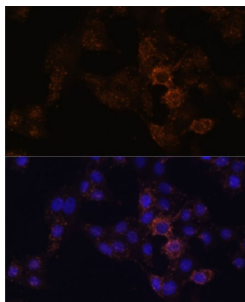


Gastrin-Releasing Peptide (GRP) Antibody

Catalogue No.: abx004878



Immunofluorescence analysis of HeLa cells using GRP Antibody (1/100 dilution). Blue: DAPI for nuclear staining.

GRP Antibody is a Rabbit Polyclonal antibody against GRP. This gene encodes a member of the bombesin-like family of gastrin-releasing peptides. Its preproprotein, following cleavage of a signal peptide, is further processed to produce either the 27 aa gastrin-releasing peptide or the 10 aa neuromedin C. These smaller peptides regulate numerous functions of the gastrointestinal and central nervous systems, including release of gastrointestinal hormones, smooth muscle cell contraction, and epithelial cell proliferation. These peptides are also likely to play a role in human cancers of the lung, colon, stomach, pancreas, breast, and prostate. Alternative splicing results in multiple transcript variants encoding different isoforms.

Target:	Gastrin-Releasing Peptide (GRP)
Clonality:	Polyclonal
Reactivity:	Human, Mouse, Rat
Tested Applications:	IF/ICC
Host:	Rabbit
Recommended dilutions:	IF/ICC: 1/50 - 1/200. Optimal dilutions/concentrations should be determined by the end user.
Conjugation:	Unconjugated
Immunogen:	Recombinant fusion protein corresponding to human GRP
Isotype:	IgG
Form:	Liquid
Purification:	Purified by affinity chromatography.
Storage:	Aliquot and store at -20°C. Avoid repeated freeze/thaw cycles.
UniProt Primary AC:	P07492 (UniProt , ExPASy)

Datasheet

Version: 3.0.0
Revision date: 15 Jun 2025



Gene Symbol: GRP

GeneID: [2922](#)

NCBI Accession: NP_002082.2

KEGG: hsa:2922

String: [9606.ENSP00000256857](#)

Buffer: PBS, pH 7.3, containing 0.02% sodium azide, 50% glycerol.

Concentration: 1 mg/ml

Note: THIS PRODUCT IS FOR RESEARCH USE ONLY. NOT FOR USE IN DIAGNOSTIC, THERAPEUTIC OR COSMETIC PROCEDURES. NOT FOR HUMAN OR ANIMAL CONSUMPTION.

For Reference Only