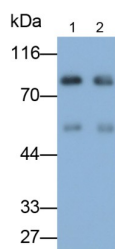


Apotransferrin (apoTf) Antibody

Catalogue No.: abx132778



Western blot analysis of Human serum (Lane 1) and plasma (Lane 2) using Apotransferrin (apoTf) Antibody (0.08 µg/ml) and HRP-conjugated Goat Anti-Mouse antibody ([abx400001](#), 0.2 µg/ml).

Apotransferrin (apoTf) Antibody is a Rabbit Polyclonal antibody for the detection of Apotransferrin (apoTf).

Target:	Apotransferrin (apoTf)
Clonality:	Polyclonal
Reactivity:	Human
Tested Applications:	WB, IHC, IF/ICC
Host:	Rabbit
Recommended dilutions:	Optimal dilutions/concentrations should be determined by the end user.
Conjugation:	Unconjugated
Isotype:	IgG
Form:	Liquid
Purification:	Antigen-specific affinity chromatography followed by Protein A affinity chromatography.
Storage:	Aliquot and store at -20°C. Avoid repeated freeze/thaw cycles.
Buffer:	PBS, pH 7.4, containing 0.02% NaN ₃ , 50% glycerol.
Concentration:	500 µg/ml
Note:	THIS PRODUCT IS FOR RESEARCH USE ONLY. NOT FOR USE IN DIAGNOSTIC, THERAPEUTIC OR COSMETIC PROCEDURES. NOT FOR HUMAN OR ANIMAL CONSUMPTION.