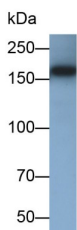


Glycogen Debranching Enzyme (AGL) Antibody

Catalogue No.: abx132810



Western blot analysis of K562 cell lysates using Glycogen Debranching Enzyme (AGL) Antibody (0.05 µg/ml) and HRP-conjugated Goat Anti-Mouse antibody ([abx400001](#), 0.2 µg/ml).

Glycogen Debranching Enzyme (AGL) Antibody is a Rabbit Polyclonal antibody for the detection of Glycogen Debranching Enzyme (AGL).

Target:	Glycogen Debranching Enzyme (AGL)
Clonality:	Polyclonal
Reactivity:	Mouse
Tested Applications:	WB, IHC, IF/ICC
Host:	Rabbit
Recommended dilutions:	Optimal dilutions/concentrations should be determined by the end user.
Conjugation:	Unconjugated
Isotype:	IgG
Form:	Liquid
Purification:	Antigen-specific affinity chromatography followed by Protein A affinity chromatography.
Storage:	Aliquot and store at -20°C. Avoid repeated freeze/thaw cycles.
Buffer:	0.01 M PBS, pH 7.4, containing 0.05% Proclin-300, 50% glycerol.
Concentration:	0.5 mg/ml
Note:	THIS PRODUCT IS FOR RESEARCH USE ONLY. NOT FOR USE IN DIAGNOSTIC, THERAPEUTIC OR COSMETIC PROCEDURES. NOT FOR HUMAN OR ANIMAL CONSUMPTION.