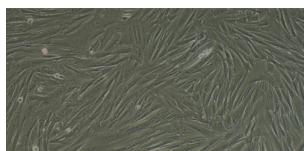
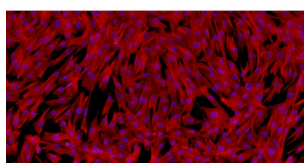


## Rabbit Neonatal Dermal Fibroblasts (NDF)

Catalogue No.: abx700148



Morphology of Rabbit Neonatal Dermal Fibroblasts.



Immunofluorescence identification of Vimentin.

Rabbit Neonatal Dermal Fibroblasts (NDF) are Adherent Rabbit Fibroblast from Rabbit Neonatal Dermal tissue.

<b>Target:</b>	Neonatal Dermal Fibroblasts (NDF)
<b>Origin:</b>	Rabbit
<b>Host:</b>	Rabbit
<b>Purity:</b>	Negative for HIV-1, HBV, HCV, mycoplasma, bacteria, yeast and fungi.
<b>Storage:</b>	Shipped at -70 °C. Upon receipt, store in liquid nitrogen (-196 °C). Avoid repeated freeze/thaw cycles.
<b>Validity:</b>	12 months.
<b>Buffer:</b>	Contains 90% FBS and 10% DMSO.

**Biological Activity:** Cell activity: > 85% (viability by Trypan Blue exclusion)

**Note:** THIS PRODUCT IS FOR RESEARCH USE ONLY. NOT FOR USE IN DIAGNOSTIC, THERAPEUTIC OR COSMETIC PROCEDURES. NOT FOR HUMAN OR ANIMAL CONSUMPTION.  
This product is shipped with dry ice.

**Directions for use: Recommended Cell Culture Conditions:**

DMEM + 10% FBS + Rabbit Fibroblasts growth supplement + 1% Penicillin-Streptomycin Solution

Temperature: 37 °C Condition: 95% air, 5% carbon dioxide

**Cell Recovery:** Thaw cells in a 37 °C water bath with shaking until the mixture has dissolved. Transfer to a centrifuge tube and add culture medium (see Recommended Cell Culture Conditions above) at a volume 3-5 times the volume of the cells. Centrifuge at 1000 RPM for 5 minutes and discard the supernatant. Transfer to a T25 flask for culture.

**Suggested Cell Passage Procedure:** Cells should be 85-95% confluent before cell passage is carried out.

1. Discard the medium and wash with PBS 1-2 times.
2. Add 1 ml of Trypsin at 37 °C, then observe the cells under a microscope.
3. When the cells appear retracted and rounded, gently tap the culture flask to detach the cells. Stop the trypsinization by adding 2 ml of culture medium containing 10% serum.
4. Add fresh medium to resuspend the cells. The recommended ratio of primary cells is 1/2. Pipette to obtain a single cell suspension.

For Reference Only