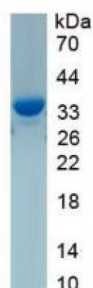


Human Protein GPR15LG (GPR15LG) Protein

Catalogue No.: abx655975



SDS-PAGE analysis of recombinant Human GPR15LG Protein.

Human Protein GPR15LG (GPR15LG) Protein is a recombinant Human protein produced in a Prokaryotic expression system (E. coli).

Target: Protein GPR15LG (GPR15LG)

Origin: Human

Expression: Recombinant

Tested Applications: WB, SDS-PAGE

Host: E. coli

Conjugation: Unconjugated

Form: Lyophilized

Activity: Not tested

Purity: > 90%

Reconstitution: To keep the original salt concentration, we recommend reconstituting to the original concentration prior to lyophilization (see Concentration) in ddH₂O. If a lower concentration is required, dilute in 10 mM PBS, pH 7.4. If a higher concentration is required, the product can be reconstituted directly in 10 mM PBS, pH 7.4, though please note that this will change the overall salt concentration. The stock concentration should be between 0.1-1.0 mg/ml. Do not vortex.

Storage: Store at 2-8°C for up to one month. For long-term storage, store at -80°C. Avoid repeated freeze/thaw cycles.

UniProt Primary AC: Q6UWK7 ([UniProt](#), [ExPASy](#))

Gene Symbol: GPR15LG

Datasheet

Version: 1.0.0
Revision date: 04 Oct 2025



GeneID: [387695](#)

HGNC: 31428

KEGG: hsa:387695

String: [9606.ENSP00000361199](#)

Molecular Weight: Calculated MW: 29.6 kDa
Observed MW (SDS-PAGE): 30 kDa

Sequence Fragment: Met1-Val81

Sequence: MRLLVLSSLL CILLLCFSIF STEGKRPAK AWSGRRTSLC CHRVPSPNST NLKGHHVRLC
KPCKLEPEPR LWVPGALPQ V

Tag: N-terminal His tag and TrxA tag

Buffer: Prior to lyophilization: PBS, pH 7.4, containing 0.01% Sarcosyl, 5% Trehalose.

Concentration: Prior to lyophilization: 200 µg/ml

Note: THIS PRODUCT IS FOR RESEARCH USE ONLY. NOT FOR USE IN DIAGNOSTIC, THERAPEUTIC OR COSMETIC PROCEDURES. NOT FOR HUMAN OR ANIMAL CONSUMPTION.