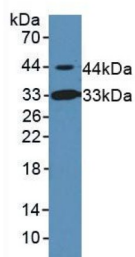
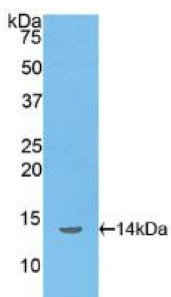


Inhibin Beta B (INHbB) Antibody

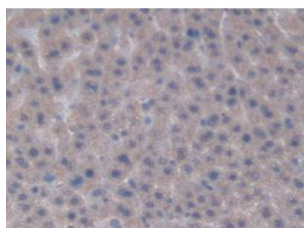
Catalogue No.: abx101311



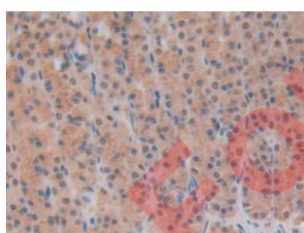
Western blot analysis of Rat Serum.



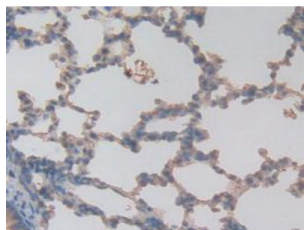
Western blot analysis of recombinant Rat INHbB.



IHC-P analysis of Rat Liver Tissue, with DAB staining.



IHC-P analysis of Rat Stomach Tissue, with DAB staining.



IHC-P analysis of Rat Lung Tissue, with DAB staining.

Datasheet

Version: 3.0.0
Revision date: 18 Jul 2025



Polyclonal Antibody to Inhibin Beta B (INHbB).

Target: Inhibin Beta B (INHbB)

Clonality: Polyclonal

Reactivity: Rat

Tested Applications: WB, IHC, IF/ICC

Host: Rabbit

Recommended dilutions: WB: 0.01-5 µg/ml, IHC: 5-20 µg/ml, IF/ICC: 5-20 µg/ml. Optimal dilutions/concentrations should be determined by the end user.

Conjugation: Unconjugated

Immunogen: INHbB (Gly297-Ala411)

Form: Liquid

Purification: Purified by antigen-specific affinity chromatography, followed by Protein A affinity chromatography.

Storage: Aliquot and store at -20°C. Avoid repeated freeze/thaw cycles.

Buffer: 0.01 M PBS, pH 7.4, containing 0.05% Proclin-300, 50% glycerol.

Note: THIS PRODUCT IS FOR RESEARCH USE ONLY. NOT FOR USE IN DIAGNOSTIC, THERAPEUTIC OR COSMETIC PROCEDURES. NOT FOR HUMAN OR ANIMAL CONSUMPTION.