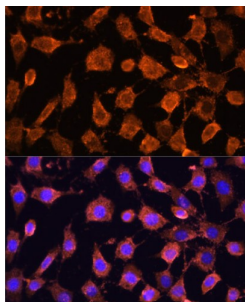


Ribosomal Protein L11 (RPL11) Antibody

Catalogue No.: abx004901



Immunofluorescence analysis of L929 cells using RPL11 Antibody (1/100 dilution). Blue: DAPI for nuclear staining.

RPL11 Antibody is a Rabbit Polyclonal antibody against RPL11. Ribosomes, the organelles that catalyze protein synthesis, consist of a small 40S subunit and a large 60S subunit. Together these subunits are composed of 4 RNA species and approximately 80 structurally distinct proteins. This gene encodes a ribosomal protein that is a component of the 60S subunit. The protein belongs to the L5P family of ribosomal proteins. It is located in the cytoplasm. The protein probably associates with the 5S rRNA. Alternatively spliced transcript variants encoding different isoforms have been found for this gene. As is typical for genes encoding ribosomal proteins, there are multiple processed pseudogenes of this gene dispersed through the genome.

Target:	Ribosomal Protein L11 (RPL11)
Clonality:	Polyclonal
Reactivity:	Human, Mouse, Rat
Tested Applications:	IF/ICC
Host:	Rabbit
Recommended dilutions:	IF/ICC: 1/50 - 1/200. Optimal dilutions/concentrations should be determined by the end user.
Conjugation:	Unconjugated
Immunogen:	Recombinant fusion protein corresponding to human RPL11
Isotype:	IgG
Form:	Liquid
Purification:	Purified by affinity chromatography.
Storage:	Aliquot and store at -20°C. Avoid repeated freeze/thaw cycles.
UniProt Primary AC:	P62913 (UniProt , ExPASy)

Datasheet

Version: 5.0.0
Revision date: 22 Jul 2025



Gene Symbol: RPL11

GeneID: [6135](#)

NCBI Accession: NP_001186731.1

KEGG: hsa:6135

String: [9606.ENSP00000363676](#)

Buffer: PBS, pH 7.3, containing 0.02% sodium azide, 50% glycerol.

Concentration: 1 mg/ml

Note: THIS PRODUCT IS FOR RESEARCH USE ONLY. NOT FOR USE IN DIAGNOSTIC, THERAPEUTIC OR COSMETIC PROCEDURES. NOT FOR HUMAN OR ANIMAL CONSUMPTION.

For Reference Only