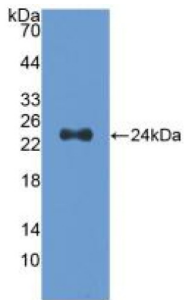
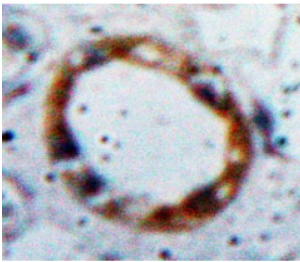


Slit Homolog 2 (SLIT2) Antibody

Catalogue No.: abx101381



Western blot analysis of recombinant Human Slit2.



IHC-P analysis of Kidney tissue, with DAB staining.

Polyclonal Antibody to Slit Homolog 2 (SLIT2).

Target:	Slit Homolog 2 (SLIT2)
Clonality:	Polyclonal
Reactivity:	Human
Tested Applications:	WB, IHC, IF/ICC
Host:	Rabbit
Recommended dilutions:	WB: 0.01-2 µg/ml, IHC: 5-20 µg/ml, IF/ICC: 5-20 µg/ml. Optimal dilutions/concentrations should be determined by the end user.
Conjugation:	Unconjugated
Immunogen:	HK1 (Val1160-Cys1333)
Form:	Liquid
Purification:	Purified by antigen-specific affinity chromatography, followed by Protein A affinity chromatography.
Storage:	Aliquot and store at -20°C. Avoid repeated freeze/thaw cycles.

Datasheet

Version: 2.0.0

Revision date: 15 Sep 2025



UniProt Primary AC: O94813 ([UniProt](#), [ExpASY](#))

Gene Symbol: SLIT2

GeneID: [9353](#)

KEGG: hsa:9353

String: [9606.ENSP00000422591](#)

Buffer: 0.01 M PBS, pH 7.4, containing 0.05% Proclin-300, 50% glycerol.

Note: THIS PRODUCT IS FOR RESEARCH USE ONLY. NOT FOR USE IN DIAGNOSTIC, THERAPEUTIC OR COSMETIC PROCEDURES. NOT FOR HUMAN OR ANIMAL CONSUMPTION.

For Reference Only