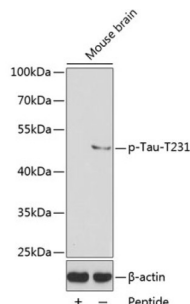


Microtubule-Associated Protein Tau Phospho-Thr231 (MAPT pT231) Antibody

Catalogue No.: abx000448



MAPT (pT231) Antibody is a Rabbit Polyclonal antibody against MAPT (pT231). This gene encodes the microtubule-associated protein tau (MAPT) whose transcript undergoes complex, regulated alternative splicing, giving rise to several mRNA species. MAPT transcripts are differentially expressed in the nervous system, depending on stage of neuronal maturation and neuron type. MAPT gene mutations have been associated with several neurodegenerative disorders such as Alzheimer's disease, Pick's disease, frontotemporal dementia, cortico-basal degeneration and progressive supranuclear palsy.

Target:	Microtubule-Associated Protein Tau Phospho-Thr231 (MAPT pT231)
Clonality:	Polyclonal
Target Modification:	Thr231
Modification:	Phosphorylation
Reactivity:	Mouse, Rat
Tested Applications:	ELISA, WB
Host:	Rabbit
Recommended dilutions:	ELISA: 1 µg/ml, WB: 1/1000 - 1/5000. Optimal dilutions/concentrations should be determined by the end user.
Conjugation:	Unconjugated
Immunogen:	A phospho specific peptide corresponding to residues surrounding T231 of human Tau
Isotype:	IgG
Form:	Liquid
Purification:	Purified by affinity chromatography.

Datasheet

Version: 5.0.0
Revision date: 06 Oct 2025



Storage: Aliquot and store at -20°C. Avoid repeated freeze/thaw cycles.

UniProt Primary AC: P10636 ([UniProt](#), [ExPASy](#))

Gene Symbol: MAPT

GeneID: [4137](#)

OMIM: [157140](#)

HGNC: 6893

KEGG: hsa:4137

Ensembl: ENSG00000186868

String: [9606.ENSP00000340820](#)

Molecular Weight: Calculated MW: 79 kDa
Observed MW: 50-80 kDa

Buffer: PBS, pH 7.3, containing 0.05% Proclin-300, 50% glycerol.

Concentration: > 0.2 mg/ml

Note: THIS PRODUCT IS FOR RESEARCH USE ONLY. NOT FOR USE IN DIAGNOSTIC, THERAPEUTIC OR COSMETIC PROCEDURES. NOT FOR HUMAN OR ANIMAL CONSUMPTION.