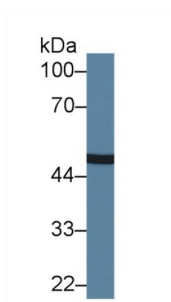
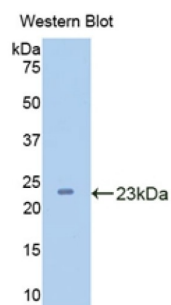


Carboxypeptidase N1 (CPN1) Antibody

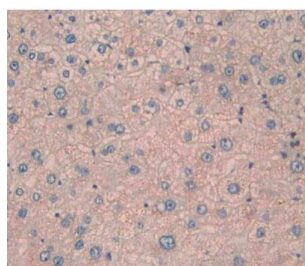
Catalogue No.: abx101845



Western blot analysis of Human A549 cell lysate, using Human CPN1 Antibody (1.5 µg/ml) and HRP-conjugated Goat Anti-Rabbit antibody ([abx400043](#), 0.2 µg/ml).



Western blot analysis of the recombinant protein.



IHC-P analysis of liver tissue, with DAB staining.

Polyclonal Antibody to Carboxypeptidase N1 (CPN1).

Target: Carboxypeptidase N1 (CPN1)

Clonality: Polyclonal

Reactivity: Human

Tested Applications: WB, IHC, IF/ICC

Host: Rabbit

Recommended dilutions: WB: 0.01-2 µg/ml, IHC: 5-20 µg/ml, IF/ICC: 5-20 µg/ml. Optimal dilutions/concentrations should be determined by the end user.

Conjugation: Unconjugated

Datasheet

Version: 3.0.0
Revision date: 20 May 2025



Immunogen:	CPN1 (Leu159-Leu325)
Form:	Liquid
Purification:	Purified by antigen-specific affinity chromatography, followed by Protein A affinity chromatography.
Storage:	Aliquot and store at -20°C. Avoid repeated freeze/thaw cycles.
UniProt Primary AC:	P15169 (UniProt , ExPASy)
KEGG:	hsa:1369
String:	9606.ENSP00000359446
Buffer:	0.01 M PBS, pH 7.4, containing 0.05% Proclin-300, 50% glycerol.
Specificity:	The antibody is a rabbit polyclonal antibody raised against CPN1. It has been selected for its ability to recognize CPN1 in immunohistochemical staining and western blotting.
Note:	THIS PRODUCT IS FOR RESEARCH USE ONLY. NOT FOR USE IN DIAGNOSTIC, THERAPEUTIC OR COSMETIC PROCEDURES. NOT FOR HUMAN OR ANIMAL CONSUMPTION.

For Reference Only