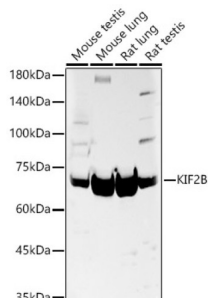


Kinesin-Like Protein KIF2B (KIF2B) Antibody

Catalogue No.: abx004968



Western blot analysis of various lysates, using KIF2B Antibody at 1/1000 dilution. Secondary antibody: HRP-conjugated Goat anti-Rabbit IgG (H+L) at 1/10000 dilution. Lysates/proteins: 25 µg per lane. Blocking buffer: 3% nonfat dry milk in TBST. Exposure time: 30s.

KIF2B Antibody is a Rabbit Polyclonal antibody against KIF2B. KIF2B (kinesin family member 2B) is a protein-coding gene. Diseases associated with KIF2B include charcot-marie-tooth disease type 4, and hereditary neuropathies. GO annotations related to this gene include microtubule binding and microtubule motor activity. An important paralog of this gene is KIF2A.

Target:	Kinesin-Like Protein KIF2B (KIF2B)
Clonality:	Polyclonal
Reactivity:	Human, Mouse, Rat
Tested Applications:	ELISA, WB
Host:	Rabbit
Recommended dilutions:	ELISA: 1 µg/ml, WB: 1/500 - 1/1000. Optimal dilutions/concentrations should be determined by the end user.
Conjugation:	Unconjugated
Immunogen:	Recombinant fusion protein containing a sequence corresponding to amino acids 544-673 of human KIF2B.
Isotype:	IgG
Form:	Liquid
Purification:	Purified by affinity chromatography.
Storage:	Aliquot and store at -20°C. Avoid repeated freeze/thaw cycles.
UniProt Primary AC:	Q8N4N8 (UniProt , ExPASy)
Gene Symbol:	KIF2B

Datasheet

Version: 2.0.0

Revision date: 30 May 2025



GeneID: [84643](#)

NCBI Accession: NP_115948.4

KEGG: hsa:84643

String: [9606.ENSP00000268919](#)

Molecular Weight: Calculated MW: 76 kDa
Observed MW: 75 kDa

Buffer: PBS, pH 7.3, containing 0.02% sodium azide, 50% glycerol.

Concentration: > 0.2 mg/ml

Note: THIS PRODUCT IS FOR RESEARCH USE ONLY. NOT FOR USE IN DIAGNOSTIC, THERAPEUTIC OR COSMETIC PROCEDURES. NOT FOR HUMAN OR ANIMAL CONSUMPTION.

For Reference Only