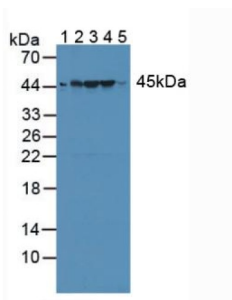
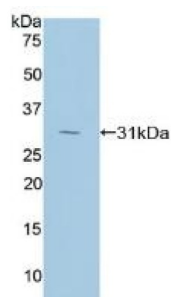


Ribonuclease Inhibitor (RI) Antibody

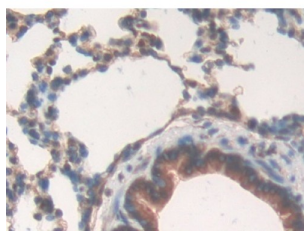
Catalogue No.: abx102051



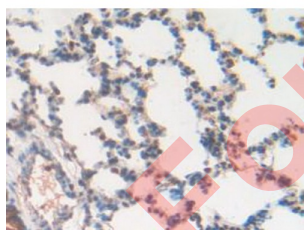
Western blot analysis of (1) Rat Serum, (2) Rat Liver Tissue, (3) Rat Heart Tissue, (4) Rat Brain Tissue and (5) Human Jurkat Tissue.



Western blot analysis of recombinant Rat RI.



IHC-P analysis of Rat Lung Tissue, with DAB staining.



IHC-P analysis of Rat Lung Tissue, with DAB staining.

Polyclonal Antibody to Ribonuclease Inhibitor (RI).

Target: Ribonuclease Inhibitor (RI)

Clonality: Polyclonal

Reactivity: Rat

Datasheet

Version: 3.0.0

Revision date: 29 Sep 2025



Tested Applications: WB, IHC, IF/ICC

Host: Rabbit

Recommended dilutions: WB: 0.01-5 µg/ml, IHC: 5-20 µg/ml, IF/ICC: 5-20 µg/ml. Optimal dilutions/concentrations should be determined by the end user.

Conjugation: Unconjugated

Immunogen: RI (Ser108-Lys358)

Form: Liquid

Purification: Purified by antigen-specific affinity chromatography, followed by Protein A affinity chromatography.

Storage: Aliquot and store at -20°C. Avoid repeated freeze/thaw cycles.

Buffer: 0.01 M PBS, pH 7.4, containing 0.05% Proclin-300, 50% glycerol.

Note: THIS PRODUCT IS FOR RESEARCH USE ONLY. NOT FOR USE IN DIAGNOSTIC, THERAPEUTIC OR COSMETIC PROCEDURES. NOT FOR HUMAN OR ANIMAL CONSUMPTION.

For Reference Only