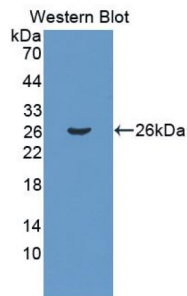


Toll Like Receptor 2 (TLR2) Antibody

Catalogue No.: abx102060



Western blot analysis of the recombinant protein.

Toll Like Receptor 2 Antibody is a Mouse Monoclonal against Toll Like Receptor 2.

Target:	Toll Like Receptor 2 (TLR2)
Clonality:	Monoclonal
Reactivity:	Human
Tested Applications:	WB, IHC, IF/ICC
Host:	Mouse
Recommended dilutions:	WB: 0.01-2 µg/ml, IHC: 5-20 µg/ml, IF/ICC: 5-20 µg/ml. Optimal dilutions/concentrations should be determined by the end user.
Conjugation:	Unconjugated
Immunogen:	TLR2 (Pro47-Gly245).
Form:	Liquid
Purification:	Purified by Protein A and Protein G affinity chromatography.
Storage:	Aliquot and store at -20°C. Avoid repeated freeze/thaw cycles.
Buffer:	0.01 M PBS, pH 7.4, containing 0.05% Proclin-300, 50% glycerol.
Note:	THIS PRODUCT IS FOR RESEARCH USE ONLY. NOT FOR USE IN DIAGNOSTIC, THERAPEUTIC OR COSMETIC PROCEDURES. NOT FOR HUMAN OR ANIMAL CONSUMPTION.