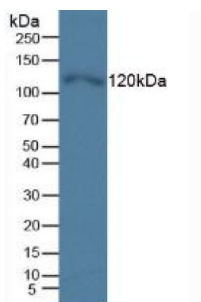
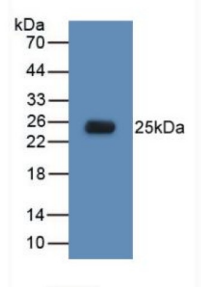


Toll Like Receptor 5 (TLR5) Antibody

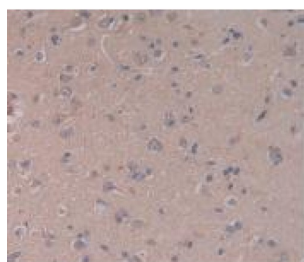
Catalogue No.: abx102073



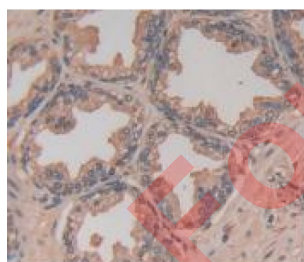
Western blot analysis of Human HeLa cells.



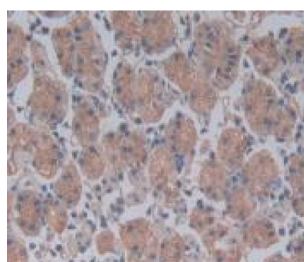
Western blot analysis of recombinant Human TLR5.



IHC-P analysis of Human Brain Tissue, with DAB staining.



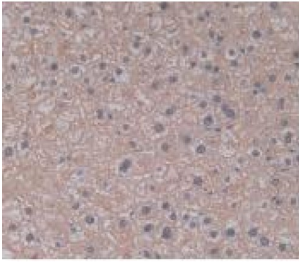
IHC-P analysis of Human Prostate Gland Tissue, with DAB staining.



IHC-P analysis of Human Stomach Tissue, with DAB staining.

Datasheet

Version: 3.0.0
Revision date: 12 Sep 2025



IHC-P analysis of Human Liver Tissue, with DAB staining.

Toll Like Receptor 5 Antibody is a Mouse Monoclonal against Toll Like Receptor 5.

Target:	Toll Like Receptor 5 (TLR5)
Clonality:	Monoclonal
Reactivity:	Human
Tested Applications:	WB, IHC, IF/ICC
Host:	Mouse
Recommended dilutions:	WB: 0.01-2 µg/ml, IHC: 5-20 µg/ml, IF/ICC: 5-20 µg/ml. Optimal dilutions/concentrations should be determined by the end user.
Conjugation:	Unconjugated
Immunogen:	Tyr693-Ser858
Isotype:	IgG _{2b} Kappa
Form:	Liquid
Purification:	Purified by Protein A and Protein G affinity chromatography.
Storage:	Aliquot and store at -20°C. Avoid repeated freeze/thaw cycles.
UniProt Primary AC:	O60602 (UniProt , ExPASy)
Buffer:	0.01 M PBS, pH 7.4, containing 0.05% Proclin-300, 50% glycerol.
Note:	THIS PRODUCT IS FOR RESEARCH USE ONLY. NOT FOR USE IN DIAGNOSTIC, THERAPEUTIC OR COSMETIC PROCEDURES. NOT FOR HUMAN OR ANIMAL CONSUMPTION.