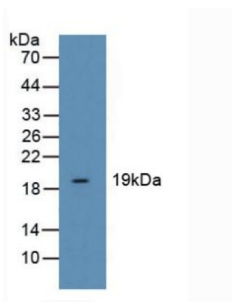
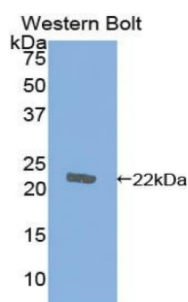


Cofilin 1, Non Muscle (CFL1) Antibody

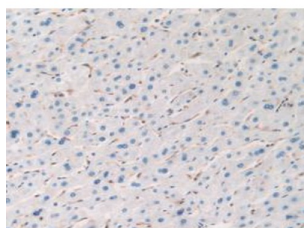
Catalogue No.:abx102118



Western blot analysis of Human Liver Tissue.



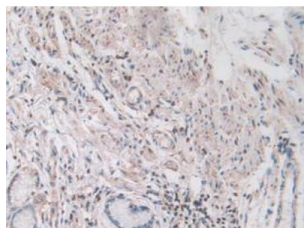
Western blot analysis of recombinant Human CFL1.



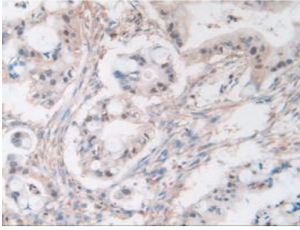
IHC-P analysis of Human Liver Tissue, with DAB staining.



IHC-P analysis of Human Brain Tissue, with DAB staining.



IHC-P analysis of Human Stomach Tissue, with DAB staining.



IHC-P analysis of Human Cholangiocarcinoma Tissue, with DAB staining.

Polyclonal Antibody to Cofilin 1, Non Muscle (CFL1).

Target:	Cofilin 1, Non Muscle (CFL1)
Clonality:	Polyclonal
Reactivity:	Human
Tested Applications:	WB, IHC, IF/ICC
Host:	Rabbit
Recommended dilutions:	WB: 0.01-2 µg/ml, IHC: 5-20 µg/ml, IF/ICC: 5-20 µg/ml. Optimal dilutions/concentrations should be determined by the end user.
Conjugation:	Unconjugated
Immunogen:	CFL1 (Ser3-Leu161)
Form:	Liquid
Purification:	Purified by antigen-specific affinity chromatography, followed by Protein A affinity chromatography.
Storage:	Aliquot and store at -20°C. Avoid repeated freeze/thaw cycles.
UniProt Primary AC:	P23528 (UniProt , ExPASy)
KEGG:	hsa:1072
String:	9606.ENSP00000432660
Buffer:	0.01 M PBS, pH 7.4, containing 0.05% Proclin-300, 50% glycerol.
Note:	THIS PRODUCT IS FOR RESEARCH USE ONLY. NOT FOR USE IN DIAGNOSTIC, THERAPEUTIC OR COSMETIC PROCEDURES. NOT FOR HUMAN OR ANIMAL CONSUMPTION.