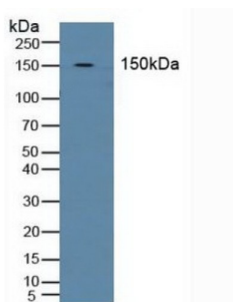
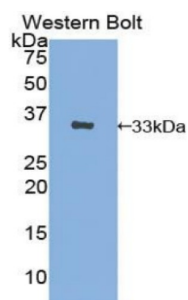


Anion Exchange Protein 1 (AE1) Antibody

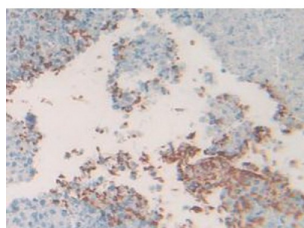
Catalogue No.: abx102314



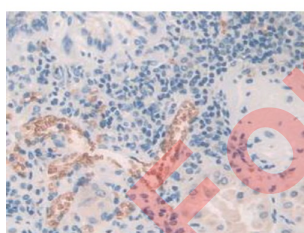
Western blot analysis of Human Blood Cells.



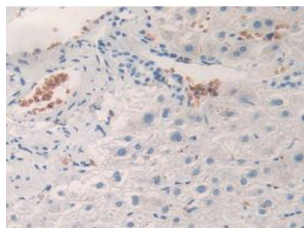
Western blot analysis of recombinant Human AE1.



IHC-P analysis of Human Lung Cancer Tissue, with DAB staining.



IHC-P analysis of Human Kidney Tissue, with DAB staining.



IHC-P analysis of Human Liver Tissue, with DAB staining.

Datasheet

Version: 4.0.0

Revision date: 20 Aug 2025



Polyclonal Antibody to Anion Exchange Protein 1 (AE1).

Target:	Anion Exchange Protein 1 (AE1)
Clonality:	Polyclonal
Reactivity:	Human
Tested Applications:	WB, IHC, IF/ICC
Host:	Rabbit
Recommended dilutions:	WB: 1-5 µg/ml, IHC: 5-20 µg/ml, IF/ICC: 5-20 µg/ml. Optimal dilutions/concentrations should be determined by the end user.
Conjugation:	Unconjugated
Immunogen:	AE1 (Ala35-Ser290)
Form:	Liquid
Purification:	Purified by antigen-specific affinity chromatography, followed by Protein A affinity chromatography.
Storage:	Aliquot and store at -20°C. Avoid repeated freeze/thaw cycles.
Buffer:	0.01 M PBS, pH 7.4, containing 0.05% Proclin-300, 50% glycerol.
Note:	THIS PRODUCT IS FOR RESEARCH USE ONLY. NOT FOR USE IN DIAGNOSTIC, THERAPEUTIC OR COSMETIC PROCEDURES. NOT FOR HUMAN OR ANIMAL CONSUMPTION.